
Collection of LCD Television Repair Tips



Brought to you by *Kent Liew*

[Http://www.LcdRepairGuide.com](http://www.LcdRepairGuide.com)

You cannot give this E-book away for free.

You do not have the rights to redistribute this E-book.

Copyright @ All Rights Reserved

Warning! No part of this E-book/guide may be reproduced or transmitted in any form whatsoever, electronic, or mechanical, including photocopying, printing, recording, or transmitting by any informational storage or retrieval system without expressed written, dated and signed permission from the author. You cannot alter, change, or repackage this document in any manner.

Disclaimer And/ Or Legal Notices

The reader is expressly warned to consider and adopt all safety precaution that might be indicated by the activities herein and to avoid all potential hazards. This E-Book is for INFORMATIONAL PURPOSES only and the author do not accept any responsibilities or liabilities resulting from the use of this information. While every attempt has been made to verify the information provided here, the author cannot assume any responsibility for any loss, injury, errors, inaccuracies, omissions or inconvenience sustained by anyone resulting from this information. Most of the repair tips and solution given should only be carried out by suitable qualified electronics engineers/technicians. Please be careful as all electrical equipment is potentially dangerous when dismantled. Any perceived slights of policy, specific people or organizations are unintentional.

Limit of Liability/ Disclaimer of Warranty:

The author and publisher of this E-book and the accompanying materials have used their best efforts in preparing this program. The authors and publisher make no representation or warranties with respect to the accuracy, applicability, fitness, or completeness of the contents of this program. They disclaim any warranties (expressed or implied), merchantability, or fitness for any particular purpose. The reader is expressly warned to consider and adapt all safety precautions that might be indicated by the activities here in and to avoid all potential hazards. By following the instructions contained herein, the reader willingly assumes all risks in connection with such instructions. The authors and publisher shall in no event be held liable for any loss or other damages, including but not limited to special, incidental, consequential, or other damages. As always, the advice of a competent legal, tax, accounting or other professional should be sought.

No this parts of this E-book/Guide/Manual shall be reproduced or transmitted by any means, electronic, mechanical, photocopying, printing and recording or otherwise . Any unauthorized use of this material is prohibited. All product illustration, product names and logo are trademark of their respective manufacturers.

If you have any information regarding the illegal reselling or duplication of the E-book, please report it to fastrepairguide@gmail.com for your reward.

Table of Contents

How To Use This Guide And How This Guide Help To You	7
ACER	8
BUSH	9
CHANGHONG	11
DELL	13
EVESHAM	14
GOODMANS	14
GRUNDIG	15
HISENSE	15
HITACHI	16
HYUNDAI	33
JVC	34
KONKA	35
LG	36
LOGIK	39
PANASONIC	40
PHILIPS	46
POLAROID	48
SAMSUNG	49
SHARP	75
SKYWORTH	78
SONY	79
SYLVANIA	81

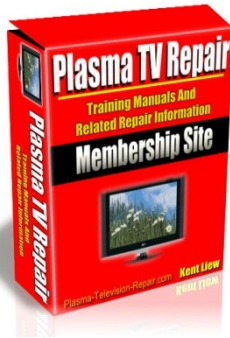
COLLECTION OF LCD TELEVISION REPAIR TIPS

TOSHIBA	84
VIEWSONIC	85
VIZIO	86
WESTINGHOUSE.....	86
WHARFEDALE.....	86
Fast Search Fault Index.....	87
Conclusion.....	90

COLLECTION OF LCD TELEVISION REPAIR TIPS

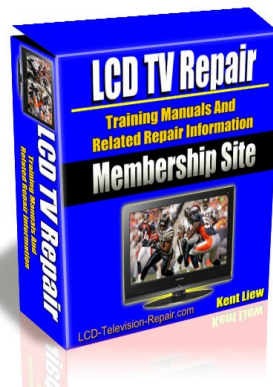
Highly recommended other great related repair information for you:

With all these great repair information, it will help you in troubleshooting and repairing electronic and the other display devices:



Plasma TV Repair Membership Site

If you're a Plasma TV repairer, then these Plasma TV repair information is you want! Some hard to find information also included inside this Plasma TV Repair Membership Site!



LCD TV Repair Membership Site

This is complete repair information for LCD Television!
These repair information included:
training manual, service manual, psu schematic diagram, service bulletin, firmware & so on!



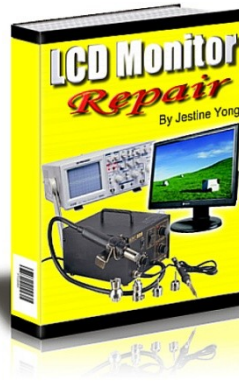
Projection TV Repair Membership Site

This membership site included two main repair information, these are Projection TV and Projector!



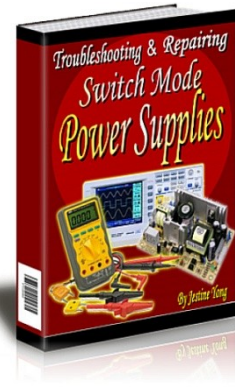
Testing Electronic Components E-book

A guide on how you can test electronic components like a professional. Even some of the testing method you haven't saw or learn before. It is enjoy learning testing electronic components through this value e-book.



LCD Monitor Repair E-Book

A step by step guide on how you can become a Professional in LCD Monitor Repair. Actually after I read this e-book, it is not only LCD Monitor but apply to LCD TV too! Some of the repair tips and gadgets can be apply to the LCD TV troubleshooting & repairing!



SMPS Power Supply Repair Guide

This is one of the great SMPS repair guide I have seen. Where Mr. Jestic Yong had reveal all his secret methods to troubleshooting & repairing the power supplies for the reader. Some of his tactic in this guide, I'm sure you're haven't seen it before. Highly recommended must have!

How To Use This Guide? And How This Guide Help To You?

- 1) This guide can save you time and money. You will get the results directly or you will know which components you want to replace. This means that you don't need to pay more money and time to learn how to troubleshoot LCD TV from starting until the end. Before using this guide, you need to know how to disassemble the LCD TV first. You need some basic testing electronic components skill and must know how to solder components on the PCB board. This guide can help you to solve LCD TV problems on the spot.
- 2) Find the solution by comparing other brands or models but with the same symptom of your LCD TV. For example, if one of your LCD TV problems is hum noise from the power supply (PSU) and you can't find your model inside this guide, you can try to find other brands or model but with the same symptom with your LCD TV problem. Then the solution can be used for reference.
- 3) For your information, most of the third-party OEM brand TVs always using the same TV manufacturer chassis. So if one of these OEM brand LCD TVs has problems, then you may find their original manufacturer repair tips (service manual or etc) to solve the problems. For example, these OEM brands LCD TV's: Sylvania LD195SSX, Emerson LD195EMX, Emerson LD190EM1, Magnavox 19MD350B-F7, Magnavox 19MD359B/F7 and Sylvania LC190SL1 are all using the FUNAI Chassis FL9.3 LCD TV! Assuming if your LCD TV model is Emerson LD195EMX has a problem, and you can't locate the repair tips for this particular model, you can always use the Sylvania LD195SSX repair tips to solve the problem.
- 4) After you have finished reading this guide, I believe you will have the confidence to repair LCD TV now. The reason for it is because you now know what is the most common fault inside the LCD TV's and what are the common parts that need to be changed.

COLLECTION OF LCD TELEVISION REPAIR TIPS

ACER

1) Model: ACER AL2671W LCD TV

Symptom: Dead.

Repair/Solution:

After change power supply IC (TNY264PN) and resistor R60 (10R/0.33W, NFR type) the problem solved.

2) Model: ACER AL2671W LCD TV

Symptom: No start-up and the LED light is orange color.

Repair/Solution:

After changed capacitor C380 but the problem remains the same. Standby PSU functions and standby 5v present. The voltage appears at pin PSON in the PSU after switch on but PSU does not start. Actually they are three 330K SMD resistors in series in the PSU which supply voltage for DLA001. Check if resistors are high resistive values.

3) Model: Acer AL2671W LCD TV

Symptom: No start-up. Orange LED light.

Repair/Solution:

Check C380 (100uf.16v) under heatsink, next to U42 and U61 on signal PCB for capacity loss.

4) Model: Acer AT3201W LCD TV

Symptom: No function on user control and remote control.
When SCART module has been removed remote control reaction ok.

Repair/Solution:

Replaced electrolytic capacitors C348 and C350 (both 220uF/16v) on mainboard.

COLLECTION OF LCD TELEVISION REPAIR TIPS

BUSH

5) Model: Bush IDLCD26TV05HD Chassis L9 (Beko) LCD TV

Symptom: No backlight and no picture. Sound ok and can be intermittently.

Repair/Solution:

Replace C512, C513 (both 1000uF/35v) and C519 (220uF/35v) in PSU. Change a 1000uF/16v capacitor on the signal board. The location of this capacitor is on the far right-hand side near the top of that board.

6) Model: BUSH LCD26TV006HDX LCD TV

Symptom: No display. The standby LED light is flashing.

Repair/Solution:

The capacitor C315 (1000uF/25v) is supplied higher rated, and it is a little bigger so use longer leads don't fit close to board. Be careful when soldering you don't accidentally remove the tiny surface mount resistors on back of board.

7) Model: BUSH LCD32TV005HD APH000 Chassis BEKO LM LCD TV

Symptom: Picture appears for a few seconds after switch on, and then the TV switches off again.

Repair/Solution:

Check C2042 and C2044 (both 680uf/35v) in PSU for capacity loss or bad ESR value.

8) Model: BUSH LCD32TV005HD APH000 Chassis BEKO LM LCD TV

Symptom: No Picture and no backlight. The TV front control buttons were working but remote control does not function.

Repair/Solution:

Replace IR receiver, where this part is short circuit.

COLLECTION OF LCD TELEVISION REPAIR TIPS

9) Model: BUSH LCD32TV022HD with 17MB15 Chassis LCD TV

Symptom: Intermittently no start-up or dead after a few hours.

Repair/Solution:

The PSU replaced and EEPROM IC re-solders, but not helps. Try to re-solder IC220 (SDA5550) and IC224 on main board the TV is back to normal.

10) Model: Bush IDLCD26TV05HD Chassis L9 LCD TV

Symptom: No Backlight

They are no 24v to the inverter board after a while. Sensitive to power supply tapping.

Repair/Solution:

Check & replace SMD 27v zener diode (red with yellow bands). The diode is located in primary side of the 24v chopper transformer supply, near pin5-8 of the SMD POWER IC (UC3843A). This PSU board part number is GDP002 ZR1910R NETZTEIL SPS 180W 24/5 12/5 PFC 2pin (LISH).

CHANGHONG

11) Model: Changhong LT2618 LCD TV

Symptom: Stuck in standby mode.

The power LED light is red colour only. Check their standby voltage on J806 pin 4 & 5 is about = 5.2V, that's mean the PSU has been supply 5V to the mainboard. Using the remote control to start-up the TV and found that socket J806 pin 1 received an ON signal and it is sent from CPU. That's mean the CPU is working properly. Testing the power supply secondary out voltage for 24V and 12V lines both also = 0V. So the TV can't start-up is not causes by the standby section, that is PSU primary section. Check the power IC IC801 (STR6759N) pin 4 (Vcc) is about ~11V. Continue checking the 12V & 24V lines corresponding components.

Repair/Solution:

Finally found that 24V output voltage was shorted to ground and the failure component is D841 shorted. After replaced D841 the TV is start-up and working properly now.

12) Model: Changhong LT4018P LCD TV

Symptom: Dead.

Normally this type of problem is causes by the PSU section or their output voltage loading side short circuit. Check PSU primary side has 300V there but nothing on secondary output. After power off TV, testing each voltage output lines with multimeter ohm range and found that the +5V line was shorted to ground.

Repair/Solution:

One by one disconnect the line was connected to +5V source and found that the USB module has been short circuit. Disconnect the USB module and power on the TV, the TV is working properly. Try to checking the USB module and found their cables connect between mainboard and USB module was shorted. After replaced the USB module cable the TV is fully working now.

COLLECTION OF LCD TELEVISION REPAIR TIPS

13) Model: Changhong LT3218 LCD TV

Symptom: Display white screen, but sound ok.

This LCD TV is using the AUO LCD panel. Where their T-CON voltage supply Vcc is using 5V. Testing their actual VCC voltage was show 4.7V only. Suspect the Vcc voltage is a bit out of their range, then using the external 5V connect to T-CON. Power on the TV and the display is ok now.

Repair/Solution:

Check the T-CON Vcc pin corresponding components and found that C504 is leaking and need to replace a new one. After replaced C504, this TV is ok.

COLLECTION OF LCD TELEVISION REPAIR TIPS

DELL

14) Model: Dell W2600 LCD TV

Symptom: OSD Menu locks after 10 minutes

Repair/Solution:

Change regulator IC (LM1117 DT-2.5) on mainboard.

15) Model: Dell W2600 LCD TV

Symptom: Intermittent or Erratic functions.

Sometime the TV locks-up problems, shuts down, no start-up and no remote control or front panel functions.

Repair/Solution:

Re-solder or reflow system ROM chip IC1234 and all regulators IC on the mainboard.

16) Model/s: Dell W2600 LCD TV

Symptom: No start-up after warm-up.

Repair/Solution:

Replace capacitor (10uf/50v) on small board mounted to power supply next to mainboard power connector.

COLLECTION OF LCD TELEVISION REPAIR TIPS

EVESHAM

17) Model: EVESHAM ALQEM37SX with 17MB15 Chassis LCD TV

Symptom: No start-up, the TV screen lights up, then switches back to standby mode.

Repair/Solution:

Please check or direct replace the C877 and C878 on PSU board for open circuits. Sometime these caps will check well, but would breaks down when under load.

GOODMANS

18) Model: GOODMANS GTV26WLCD LCD TV

Symptom: Shuts down and LED blinks.

Repair/Solution:

Replace the C877 and C878 (both 15nF/630V) near heatsink, at top left corner of PSU.

19) Model: GOODMANS GTV32W22HD AVZOOO Chassis LM LCD TV

Symptom: Dark picture. OSD bounces.

Repair/Solution:

Replace the C2042 and C2044 (680uf) in PSU.

COLLECTION OF LCD TELEVISION REPAIR TIPS

GRUNDIG

20) Model: Grundig GULENAR32HDIP with Chassis L9 LCD TV

Symptom: Stuck in standby mode, LED light is blue color.

Repair/Solution:

The blue LED always stays on, even when appliance is on standby mode. Capacitor C931 (1000uF) replaced but the TV is still dead with 12v and 24v ok. Check and replace diode D300 on the right-hand side, on middle-top of the main board. The problem solved.

HISENSE

21) Model/s: Hisense LCD4204EU LCD TV

Symptom: Dead after a Bang Noise.

Repair/Solution:

Replace chopper drive STRX6769, RE038 (10R) and RE032 (150R) in primary PSU.

22) Model: Hisense TLM4788P LCD TV

Symptom: Dead.

TV power on, testing the PSU secondary output voltage +12V, +5V_M & +24V all are = 0V no output. After that, testing the standby voltage +5V_S also same as 0V! That's mean it was the standby voltage supply section malfunction. Checking the NE521 (STR-A6351) pin 7 & 8 has 300V, but pin 3 is 0V. Normally this Power IC Vcc pin has about 15V.

Repair/Solution:

Check the corresponding components on Vcc line and found that RE523 was open and other parts are normal. Replaced a new RE523 resistor, the TV is ok

COLLECTION OF LCD TELEVISION REPAIR TIPS

HITACHI

23) Model: Hitachi 32LD6200_A_B_C LCD TV

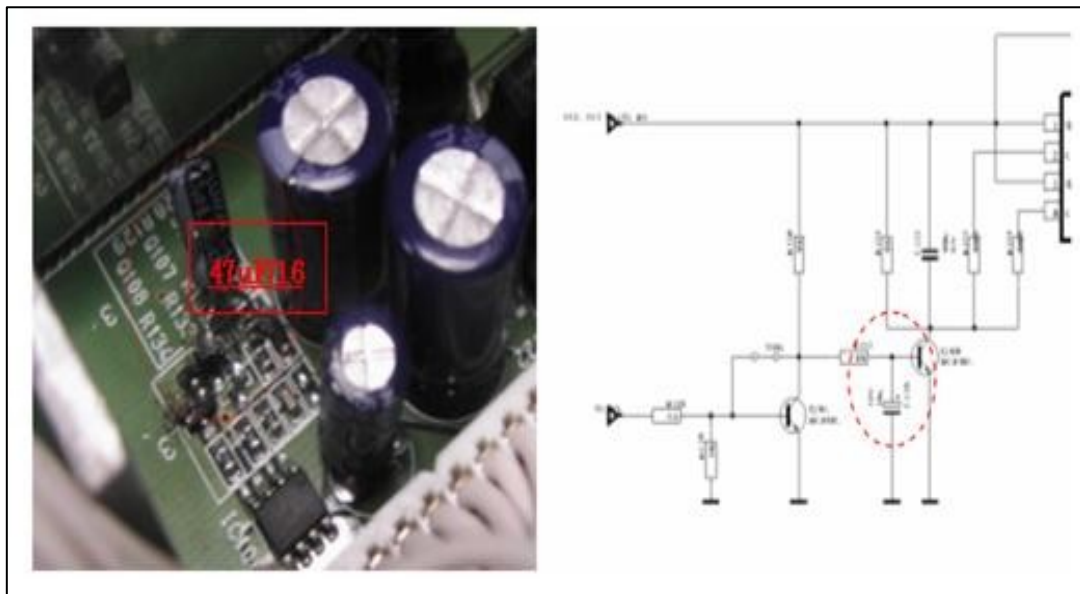
Symptom: Set fails to power on/switch on.

If MB11-6 Main board is used instead of the original Main board MB11-2 the unit won't switch on.

Unit switches off immediately and a clicking noise comes from the Power Regulator Board.

Repair/Solution:

Replace the LVDS cable (p/n: VS30041693) and add a 47uF (p/n: VS30000396, CAP EL47UF16V) electrolytic capacitor to Power Regulation Board.



24) Model: Hitachi 32LD6200_A_B_C LCD TV

Symptom: Unit does not switch on or fails to power on.

Unit does not work, standby LED not lighting.

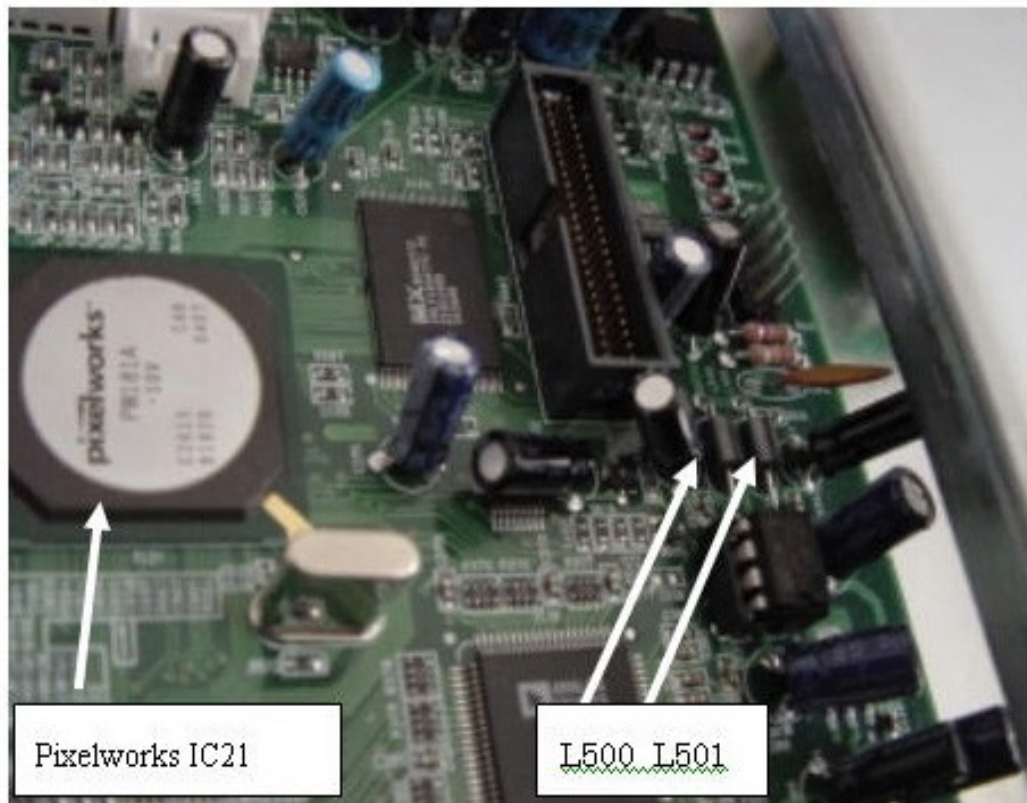
Cause: Working of Pixelworks controller IC21 depends on ambient temperature.

COLLECTION OF LCD TELEVISION REPAIR TIPS

If IC is heated externally the unit starts to work normally.

Repair/Solution:

Replace Ferrite bead L500 and L501 with a jumper wire without the ferrite rod.



COLLECTION OF LCD TELEVISION REPAIR TIPS

25) Model: Hitachi 32LD6600_A_B_C LCD T V

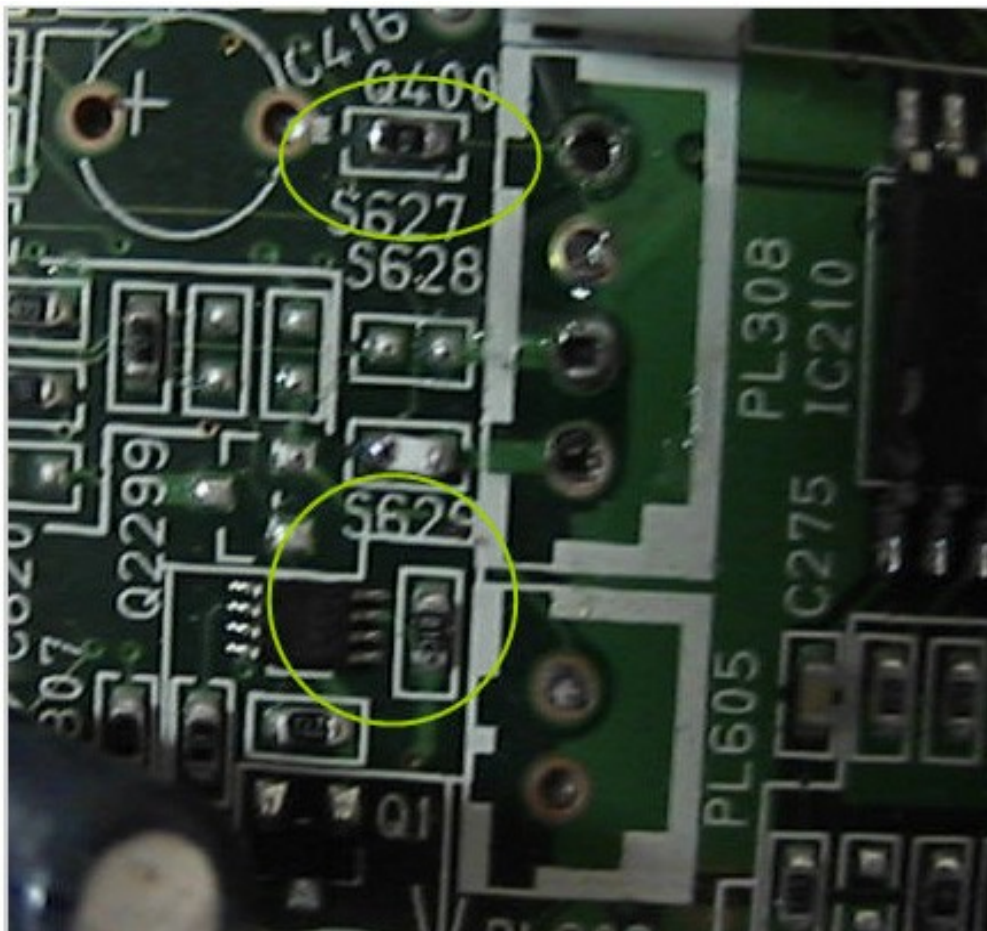
Symptom: No picture, but sound ok.

Cause: Dry joints on components S627 and S629 near connector PL308 on the main board.

Repair/Solution:

Re-solder components S627 and S629; also check other components for dry joints near the connector.

See the picture below:



COLLECTION OF LCD TELEVISION REPAIR TIPS

26) Model: Hitachi 32LD7200 LCD TV

Symptom: Distorted Sound/Audio.

Sound is distorted when the set is first switched on. After a while the fault clears and the set works normally.

Repair/Solution:

Try to re-solder first, if still the same then replace Joint PWB. **p/n:** TP01336.

27) Model: Hitachi 32LD7200 LCD TV

Symptom: Mechanical Noise from Screen in Dynamic Mode

Cause: Low back light setting on Dynamic mode.

Backlight settings are different for each mode:

DYNAMIC: 12

NATURAL: 15

CINEMA: 10

Repair/Solution:

Increase backlight settings in Dynamic mode from 12 to 20.

If similar noise problem occurs on other modes, adjust backlight levels to the position in which noise becomes the minimum.

ADJUSTMENT

Backlight level can be adjusted in USER menu only.

COLLECTION OF LCD TELEVISION REPAIR TIPS

32LD7200 UserMenu

Picture mode	Dynamic	Natural	Cinema
Contrast	+31	+31	+26
Bright	0	0	+2
Colour	+4	0	-5
Sharpness	-5	-8	-10
Colortemp	Cool	Normal	Warm
Contrast mode	Dynamic	Auto	Normal
Backlight	+20	+15	+10
YNR	Off	Off	Off
CNR	Low	Low	Off
Film mode	Off	Off	On
LTI	Off	Off	Off
CTI	Middle	Low	Off
Black Enhancement	Middle	Low	Off

Select Menu ----- Picture ----- Backlight ----- and adjust as necessary.

28) Model: Hitachi 37LD6600, 37LD6600A LCD TV.

Symptom: Mechanical Noise from Screen Only in CINEMA MODE

Cause: High back light setting on Cinema mode.

Backlight settings are different for each mode:

DYNAMIC: 00

NATURAL: 50

CINEMA: 100

Repair/Solution:

Reduce backlight settings in Cinema mode from 100 to 59 as follows.

Enter Service Mode with the remote control,

PRESS MENU

4725 OR 1267 OR 1461 (there are 3 different software versions, only one code will work)

Service Menu will appear, Select **PIC ADJUST** and enter with **VOL+**

COLLECTION OF LCD TELEVISION REPAIR TIPS

A second service menu will appear, the bottom adjustment in the menu is Back Light setting and will be set to 100.

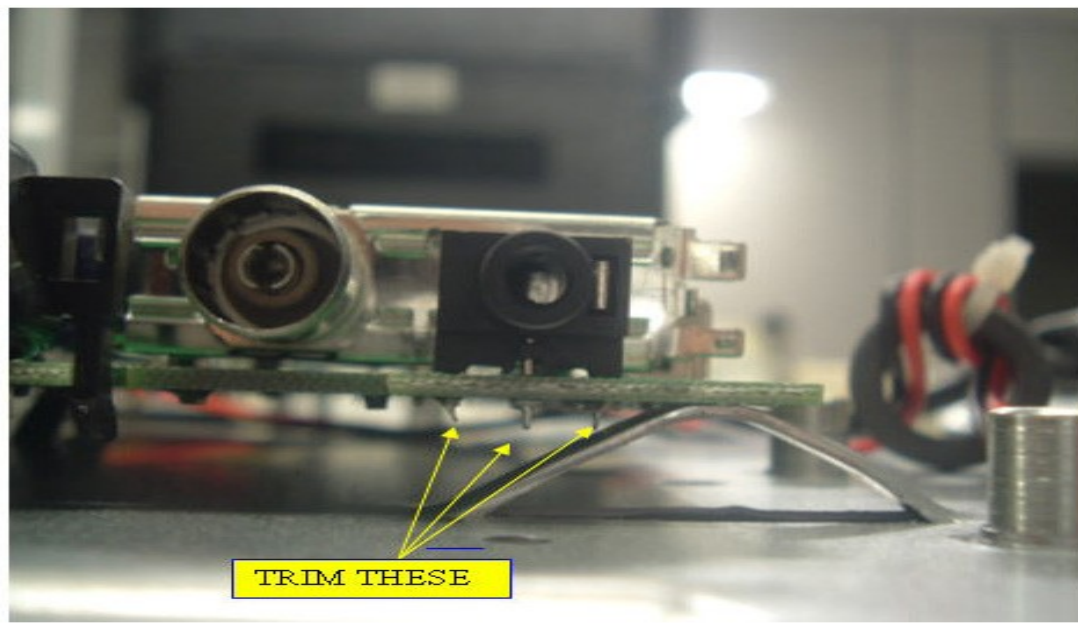
From the Mode Heading select CINEMA mode.

Select Back Light and reduce the setting to 59.

To memorise and exit Service Mode press Standby.

29) Model: Hitachi 37LD6600, 37LD6600A LCD TV

Symptom: No sound or intermittent sound



Repair/Solution:

Pins of headphone socket touching the chassis. Trim these pins and problem solved.

30) Model: Hitachi L32A01, L32A01A, L32H01E, L32H01EA, L32H01U, L32H01UA, 32LD8D20E_EA, 32LD8D20U, 32LD8D20UA LCD TV

Symptom: Audio is distorted constantly and may have some background noise

Repair/Solution:

Replace D845 and D846 (both UF5402 3A/200V 150A, part number: VS30009366) on the power supply board (PSU).

COLLECTION OF LCD TELEVISION REPAIR TIPS

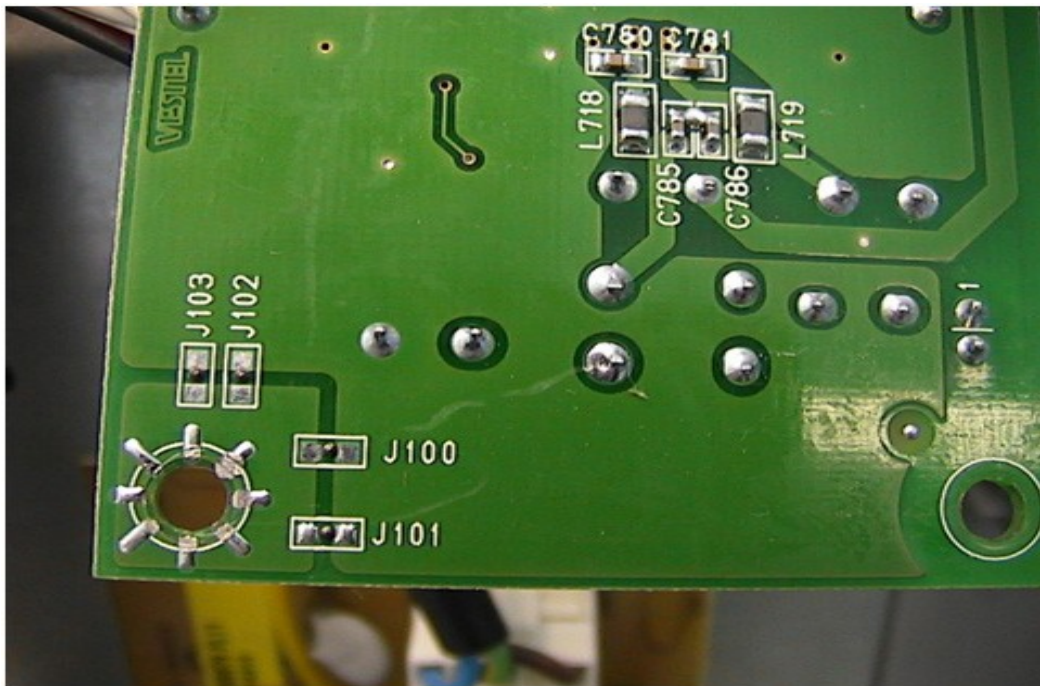
31) Model: Hitachi 26LD6200 LCD TV

Symptom: Audio noise may be heard from speakers when unit is in Tuner mode and the volume control is set to near minimum.

Repair/Solution:

Add four SMD jumpers on the Amp board to positions J100, J101, J102 and J103 (JUMPER SMD 0603 R).

See Picture Below:



32) Model/s: Hitachi 26LD6600 & 26LD6600A, 32LD6600_A_B_C, 37LD6600 LCD TV

Tip: Burn in Mode when replacing Main PCB

When replacing the main PCB on these models, the new part may be in the 'burn in' mode from manufacture. This will result in the image on screen flashing different colours.

To exit the burn in mode:

Use the remote control:

1. Press menu button

COLLECTION OF LCD TELEVISION REPAIR TIPS

2. Press the following button sequence: 4,7,2,5:
3. Go to “OPTIONS” and then set “BURN IN MODE” to either ON or OFF.

33) Model: Hitachi 22LD4200 LCD TV

Symptom: Green horizontal line flashing across the screen intermittently.

Repair/Solution:

Remove resistor R149 on the Input signal board (Signal processing-analogue) and replace it with Jumper SMD (0 ohm, part number: VS30001734).

34) Model/s: Hitachi 26LD6600 & 26LD6600A_B_C_D, 37LD6600, 37LD6600A, 37LD8600, 37LD8700C, 37LD8700U LCD TV

Tip: Hotel Mode

To enter the hotel mode of these model LCD TV:

1. Press Menu
2. Press the following buttons in sequence: 1,3,2,5

The Hotel Menu will then appear.



COLLECTION OF LCD TELEVISION REPAIR TIPS

MENU ITEMS	TYPE	RANGE
Hotel Mode	Toggle	ON/OFF
Startup Position	List	Last Position/ TV/ AV-1/ AV-2/ DTT/ AV-3/ AV-4/ AV-4S/ AV-5/ PC RGB
Volume Level	Slider	0...63
Front Key	Toggle	ON/OFF
Osd Menu	List	Enable/ Disable Install Menu/ Disable All Menus
Autosave	List	Update Last Data/ Not Stored

Hotel Menu has six items. These are;

- 1. Hotel Mode** is used to activate/deactivate the hotel mode.
 - . **ON** : TV switches to hotel mode.
 - . **OFF** : TV switches to normal TV mode.
- 2. Startup Position** is used to choose the source that will be switched on automatically during start up, from the available sources.
 - . **Last Position** : During start up TV switches to last source before standby on or power off.
 - . **Others** : During start up TV switches to selected source.
- 3. Volume Level** is used to set the maximum volume level of Hotel TV.
- 4. Front Key** is used to enable/disable the front panel keys of Hotel TV.
 - . **ON** : The user can use front panel keys.
 - . **OFF** : The user cannot use front panel keys.
- 5. Osd Menu** is used to enable/disable the Osd menus of Hotel TV.
 - . **Enable** : Enables all Osd menus.
 - . **Disable Install Menu** : Disables "Install" and "Program" menus.
 - . **Disable All Menus** : Disables all Osd menus.
- 6. Autosave** is used to enable/disable saving user settings while stanby on or power off.
 - . **Update Last Data** : Last user settings are loaded during start up.
 - . **Not Stored** : User settings are not saved.

COLLECTION OF LCD TELEVISION REPAIR TIPS

ACTIVATING THE HOTEL TV

The MB15 has the ability of configuring Hotel TV. The necessary steps to configure the TV as a Hotel TV are given below.

1. Go to the "Hotel Menu" as described before.
2. Make "ON" the "Hotel Mode" item. Now, the Hotel TV was activated.
3. Select the source that will be switched on automatically during start up.
4. Adjust the maximum volume for TV by using the "Volume Level" item in "Hotel Menu".
5. Enable/Disable front panel keys of Hotel TV.
6. Enable/Disable the Osd menus.
7. Enable/Disable saving the user settings.

MB15 HOTEL TV FEATURES

In the Hotel TV mode,

1. The user cannot increase the volume above the value which is specified in "Hotel Menu" before.
2. The user cannot reach all or some of the menus.
3. The user cannot use front panel keys if "Front Key" item is disabled in "Hotel Menu".
4. The user cannot save his/her own settings if "Autosave" item is adjusted as "Not stored".

DEACTIVATING THE HOTEL TV

To configure the TV as a normal TV again,

1. Go to "Hotel Menu". (Press menu & after although you see nothing on the tv screen press the right keys)
2. Make "OFF" the "Hotel Mode" item of "Hotel Menu". Now, the Hotel Mode is deactivated.

35) Model: Hitachi 28LD5200E LCD TV

Symptom: Intermittent Color or no color.

- Colour drops out after the unit has been running for two to three hours.

Repair/Solution:

COLLECTION OF LCD TELEVISION REPAIR TIPS

SCART PRESCALE AVL ON 14

SCART VOLUME AVL ON 122

GO TO STANDBY TO MEMORISE SETTINGS

37) Model: Hitachi 22LD4500U, 22LD4500UK LCD TV

Symptom: No sound or very low sound on terrestrial and no sound on Digital or any AV inputs.

Repair/Solution:

This is a software/firmware problem. Replace memory IC302 Type 24LC16 (part number: VS20167612). All customer controls are set to minimum on the new IC. Please reset language and all picture controls to normal after replacing the IC.

38) Model/s: Hitachi L32VP03E, L32VP03U LCD TV

Symptom: No switch on from standby mode.

If the TV is switched into standby when it has been running for some time and is warm, it will not come out of standby until the set has cooled completely.

Repair/Solution:

Replace the crystal X104 (XTAL 14.318MHZ 20PF 20PPM SMD ROHS, part number: VS30054926) on the main pcb/main logic board, the system control section.

39) Model/s: Hitachi 32LD6200_A_B_C, 32LD6600_A_B_C LCD TV

Symptom: Picture Display Problem.

See picture on next page:

COLLECTION OF LCD TELEVISION REPAIR TIPS



COLLECTION OF LCD TELEVISION REPAIR TIPS



Cause: Various picture problems can be caused by poor connection of the LVDS cable on connector PL103 on the Main board.

Repair/Solution:

Remove LVDS cable from connector PL103 and reinsert carefully.

Make sure both end of the LVDS cable are inserted properly between PL103 and the display panel.

40) Model/s: Hitachi 26LD6600 & 26LD6600A_B_C_D, 32LD8A10, 37LD6600, 37LD6600A & 37LD8500, 37LD8550, 37LD8600, 37LD8700C, 37LD8700CA, 37LD8700U, 37LD8700UA, 37LD8A20, 37LD8D10, 37LD8D20E, 37LD8D20U LCD TV

Symptom: Poor image quality or solarisation of image.

As shown in the images below.

This phenomenon may be intermittently and only displayed after a number of hours/days.

COLLECTION OF LCD TELEVISION REPAIR TIPS



Cause: The glue on the LDVS cable heats up over time and the properties change and creating a contact problem within the cable and the PCB. This causes permanent or intermittent picture problems

COLLECTION OF LCD TELEVISION REPAIR TIPS

Repair/Solution:

Remove the LDVS cable and clean the connections at the LCD control panel. If this step still not solves the problem, then replace the LVDS cable.

- | | | |
|-------------------|---------------|--|
| Part: | VS30044366 | CABLE 30P/130 QDIA UL20276 |
| Reference: | LVDS
CABLE | LCD-PANEL<->PWB MAIN. To fit models:
26LD6600, 26LD6600B, 26LD6600C, 26LD6R10,
32LD8700CB, 32LD8700UB |
| Part: | VS30044576 | CABLE 30P/150 LVDS+FER UL20276 |
| Reference: | LVDS
CABLE | LCD-PANEL<->PWB MAIN. To fit models:
(26LD6600A, 32LD6600, 32LD6600A) |
| Part: | VS30044866 | CABLE 30P/150 LVDS 32CMOB1 |
| Reference: | LVDS | PL103 <-> SCREEN V320B1-L01. To fit models :
32LD6600B, 32LD8A10, 32LD8600, 32LD8700C,
32LD8700TU, 32LD8700U |
| Part: | VS30042003 | CABLE CONNECTOR LVDS 30P/230 |
| Reference: | LVDS | CONNECTOR MAIN <-> PANEL. To fit models :
32LD6600C, 37LD6600, 37LD6600A, 37LD8600 |
| Part: | VS30053003 | CABLE LVDS 30P/150 W/DC+F UL20 |
| Reference: | LVDS | CONNECTOR MAIN <-> PANEL. To fit model:
26LD6600D |
| Part: | VS30051803 | CABLE LVDS 30P/180 32CMOB1 |
| Reference: | LVDS | ÄPL103 <-> SCREEN V320B1-L04. To fit models:
32LD8A10A, 32LD8600A, 32LD8700CA,
32LD8700TU, 32LD8700UA |
| Part: | VS30054878 | CABLE LVDS 30P/130 UL20276 |
| Reference: | LVDS
CABLE | To fit model : 32LD8600B |
| Part: | VS30048584 | CABLE LVDS 30P/230 |
| Reference: | LVDS
CABLE | To fit models : 37LD8A20, 37LD8D10,
37LD8D20E, 37LD8D20U, 37LD8500, 37LD8550,
37LD8600, 37LD8700C, 37LD8700U |
| Part: | VS30051781 | CABLE LVDS 41P/230 37"HIT |
| Reference: | LVDS | To fit models: 37LD8700CA_UA, 37LD8600A. |

COLLECTION OF LCD TELEVISION REPAIR TIPS

41) Model: Hitachi 32LD6600 LCD TV

Symptom: Solarisation of the image.



Repair/Solution:

Replace X600, 6MHz Crystal (P/N: VS30006662) on signal processing-analogue section.

COLLECTION OF LCD TELEVISION REPAIR TIPS

HYUNDAI

42) Model: Hyundai Imagequest HQL260WR LCD TV

Symptom: Shuts down after a few minutes

Three 1000uf electronic capacitors in PSU replaced unsuccessfully.

Repair/Solution:

Change opto-coupler IC PC102-2. The problem solved.

43) Model: Hyundai Imagequest HQL260WR LCD TV

Symptom: Slow start-up problem.

Repair/Solution:

Replace the capacitor C109, C110 and C111 (all 1000uf/35v). Also check SMD resistor R56 and R57 (both 22K) for dry joints.

COLLECTION OF LCD TELEVISION REPAIR TIPS



44) Model: JVC LT32DX7B LCD TV

Symptom: No functions after lightning strike.

Repair/Solution:

The primary voltage 300v is present. But secondary voltage output was only 21 volt. Replace standby transformer T9201.

KONKA

45) Model: KONKA LC42AS28 LCD TV

Symptom: Display show “No Input Signal” message only.

Try call out the OSD Menu, but it is response slowly about after 1 minutes then the OSD came out. Even try other signal input like AV also same problem, but when input the YPbPr signal, it can show the display properly. But their responses to call out the OSD Menu still the same, slowly to come out.

Repair/Solution:

Since the signal YPbPr display ok but the AV and TV show error message “No Signal Input”, so problem will be the Video/Audio processor N401 (TDA15063HI) or their corresponding components failure. Testing the voltage supply pin 84 (Vcc=8V normal value), it only show = 0V! Check the Vcc supply line corresponding components and found R811 open. After replaced this R811 resistor, the TV was back to normal now. Even the OSD Menu also working properly. That’s mean the N401 not working will affect the N400 (24C16) to Read/Writer data and cause it to slowly came out OSD Menu.

46) Model: Konka LC-TM3719 LCD TV

Symptom: After power on the TV, but it is stuck in standby mode.

Try using the remote control and the TV front panel button also not function. The power LED still show the red colour light only.

Repair/Solution:

After replaced and program the N502 (24LC32) and the N405 (W39L040 AP70Z), the TV is working properly now.

COLLECTION OF LCD TELEVISION REPAIR TIPS



47) Model: LG 27LC2R Chassis LP61A LCD TV

Symptom: No backlight.

Repair/Solution:

Check the SMD fuse F1 on inverter board for open circuit.

48) Model: LG 32LC56 LCD TV

Symptom: Picture divided into several parts. Display distortion.

Repair/Solution:

Replace T-CON board (Part Number: 218394).

49) Model: LG 32LC56ZC LCD TV

Symptom: No start-up. Standby LED flashes from red to green.

Repair/Solution:

Replace the C202, C206, C217 and C218 (2200uf/10v all), and C226 (470uf/25v).

50) Model: LG 32LE2RZJ Chassis LP61A LCD TV

Symptom: Remotes control no functions at all.

Repair/Solution:

Replace SMD capacitor at output of IR receiver.

COLLECTION OF LCD TELEVISION REPAIR TIPS

51) Model: LG 37LE2R Chassis LP61A LCD TV

Symptom: No start-up.

Repair/Solution:

Replace SMD regulator TL431 (U130) in PSU.

52) Model: LG 32LC45 LCD TV

Symptom: "No Signal" displayed. No sound and no picture. Backlight and OSD menu is ok. LED is green color light.

Repair/Solution:

Try to update firmware if not then replace main signal board.

53) Model: LG 47LY95 Chassis LD75A LCD TV

Symptom: Negative picture and no sound.

Voltage output low at pin 7 of connector P202.

Repair/Solution:

Check Q202 (AP72T02GH), U203 (APU3037M), Q203 (AP60T03GH) and connector P202 in PSU. Also check or replace C221, C222, C223 and C232.

54) Model: LG 47LF66 LCD TV

Symptom: No power

Repair/Solution:

Change the C202, C206 and C217 (all 2200uf/10v) on IP board (Inverter Power Supply Board).

COLLECTION OF LCD TELEVISION REPAIR TIPS

55) Model: LG 37LF66 LCD TV

Symptom: No power

IC U500 (ICE3B1565J) is short circuit and fusible resistor FB501 (2.2R) open circuit.

Repair/Solution:

Check safety resistor for open circuit. Replace D501 (UF4007), 3.6v zener diode ZD502 (1N5227) and C508 (33uF/50v).

56) Model: LG 32LC56ZC LCD TV

Symptom: No start-up. Standby LED flashes from red to green

Repair/Solution:

Check or replace C202, C206, C217, C218 (all 2200uF/10v) and C226 (470uF/25v).

57) Model: LG 32LC56 LCD TV

Symptom: Picture divided into several parts. Distorted picture

Repair/Solution:

Replace T-CON (Part Number: 218394).

58) Model: LG 32LC56ZC LCD TV

Symptom: Stuck in standby mode.

Repair/Solution:

Check & change C204. If the pcb board discolored around R208 resistor then replace PSU.

COLLECTION OF LCD TELEVISION REPAIR TIPS

LOGIK

59) Model: Logik LCXW32HDI LCD TV

Symptom: No sound or picture. The front controls light up & relay clicks.

Repair/Solution:

Check or replace R65 (2M) around U3 PSU for open circuit.

COLLECTION OF LCD TELEVISION REPAIR TIPS

PANASONIC

60) Model: Panasonic TX-32LED7FM LCD TV

Symptom: Dead.

Repair/Solution:

Replace the resistor R850 (820K/0.25W).

61) Model: Panasonic TX-32LED7FM Chassis GLP22M LCD TV

Symptom: Enter Service Mode.

Repair/Solution:

1. Press F button to access volume setting.
2. Press V- button on set until volume reaches minimum.
3. While still holding V- button press 0 button three times on remote control.
4. Press 1 and 2 buttons to scroll through the menu.
5. Press 3 and 4 buttons to select an adjustment.

62) Model: Panasonic TC32LX85 LCD TV

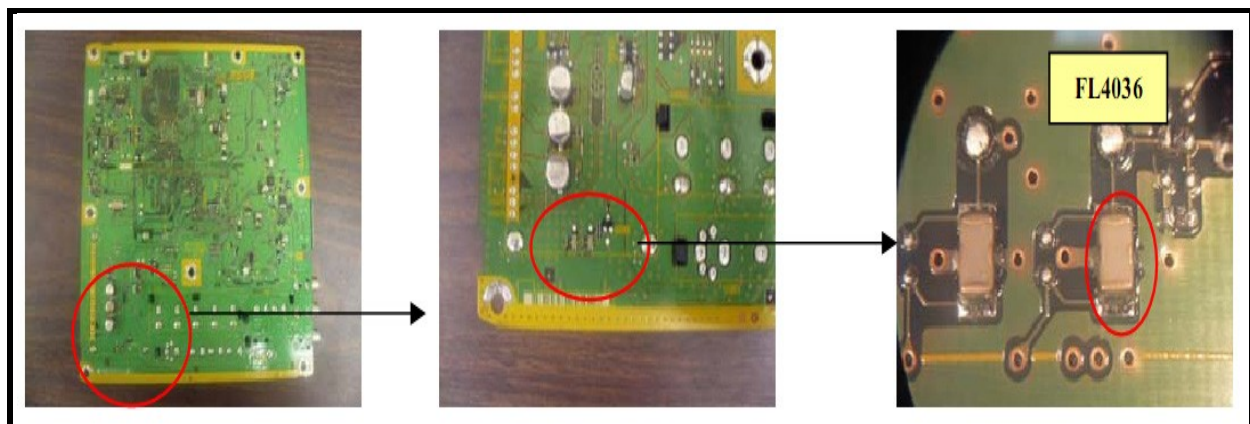
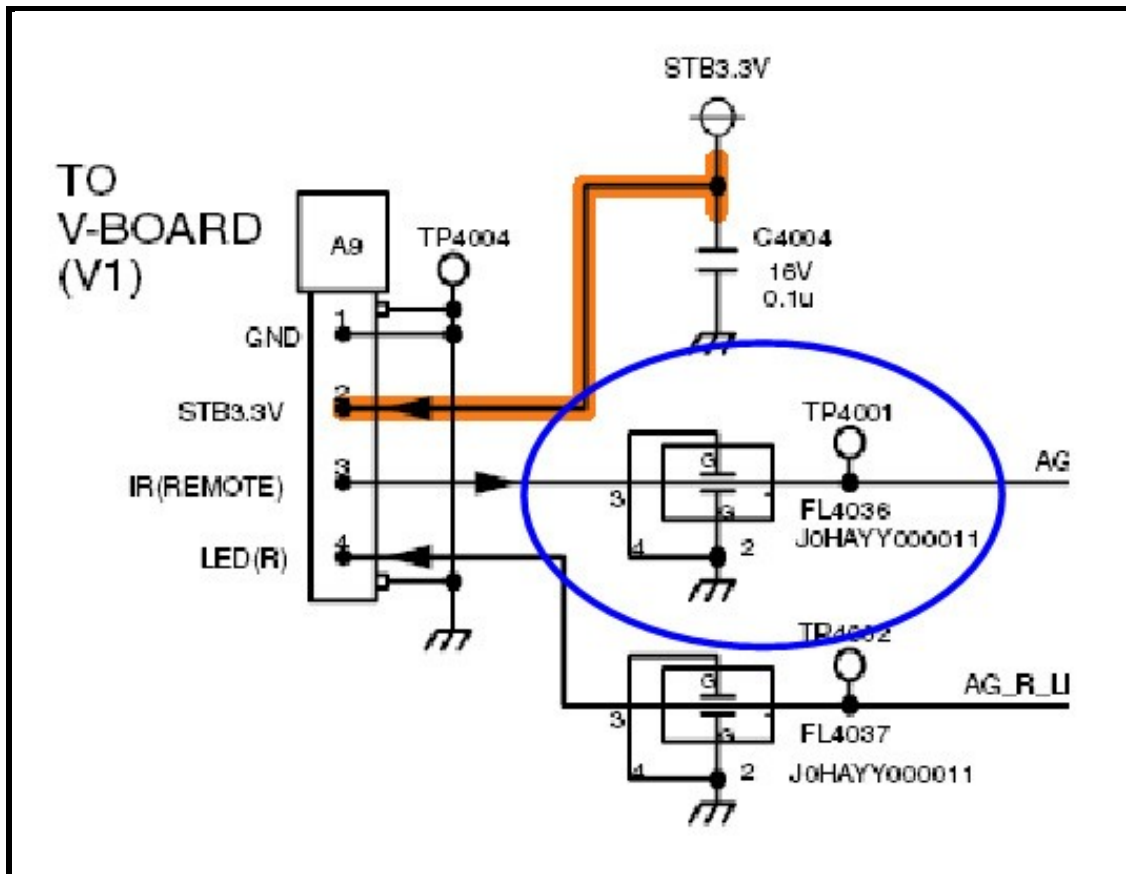
Symptom: TV does not respond from remote control signal

Cause: Leaky lines filter FL4036.

Repair/Solution:

Replace FL4036 (Part#: JOHAYY000011). Please refer to the picture below:

COLLECTION OF LCD TELEVISION REPAIR TIPS



COLLECTION OF LCD TELEVISION REPAIR TIPS

63) Model: Panasonic TC-32LX600 LCD TV

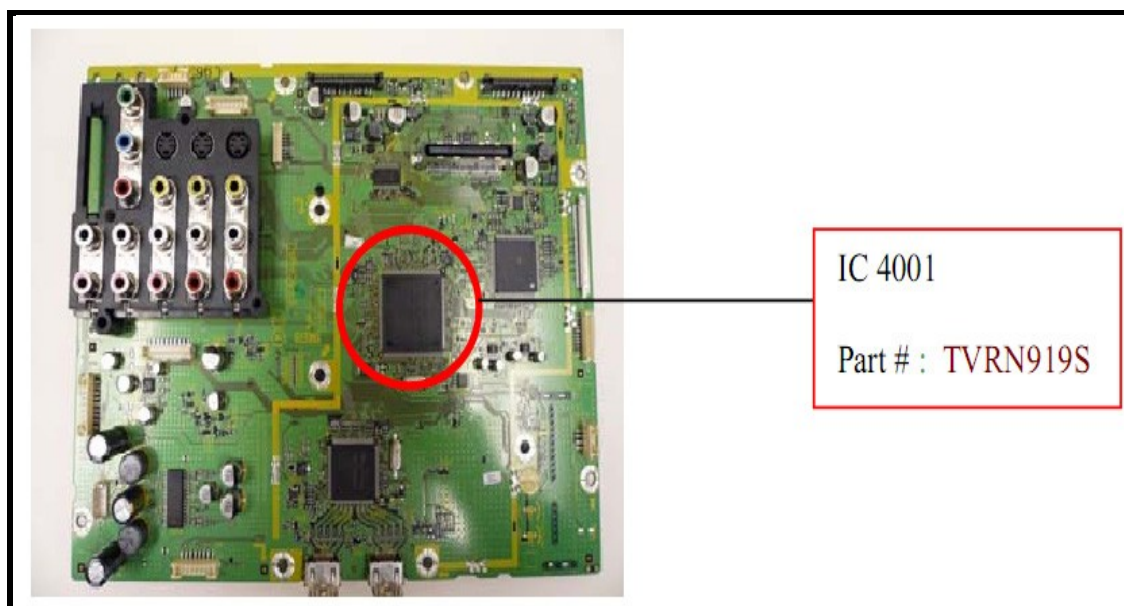
Symptom: Colour distorted with patches around object, sometimes happened after running for 4 hours.



Cause: Digital signal processing error

Repair/Solution:

Try to reflow or replace IC4001.



COLLECTION OF LCD TELEVISION REPAIR TIPS

64) Model: Panasonic TC-26LX85 & TC-32LX85 LCD TV

Symptom: Sound distortions, mostly noticeable during commercial programming

Cause: Some stations send out of the specs signal causing sound distortion in higher frequencies.

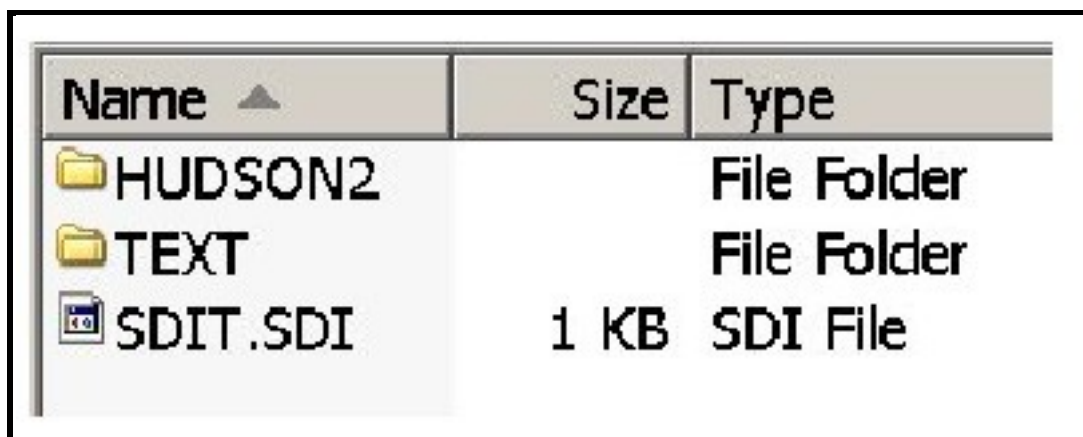
Repair/Solution:



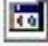
Software upgrade is needed if unit has serial number before specified below:

**82330746 for TC26LX85

**82340342 for TC32LX85

Procedure: Software Hudson2 version 1.10 to be loaded to SD card. It contains 3 files as on the picture below;



Name ▲	Size	Type
 HUDSON2		File Folder
 TEXT		File Folder
 SDIT.SDI	1 KB	SDI File

Perform the upgrade following below steps:

1. Turn on TV and insert SD card into SD card slot. TV will show the screen as in Fig1.

COLLECTION OF LCD TELEVISION REPAIR TIPS

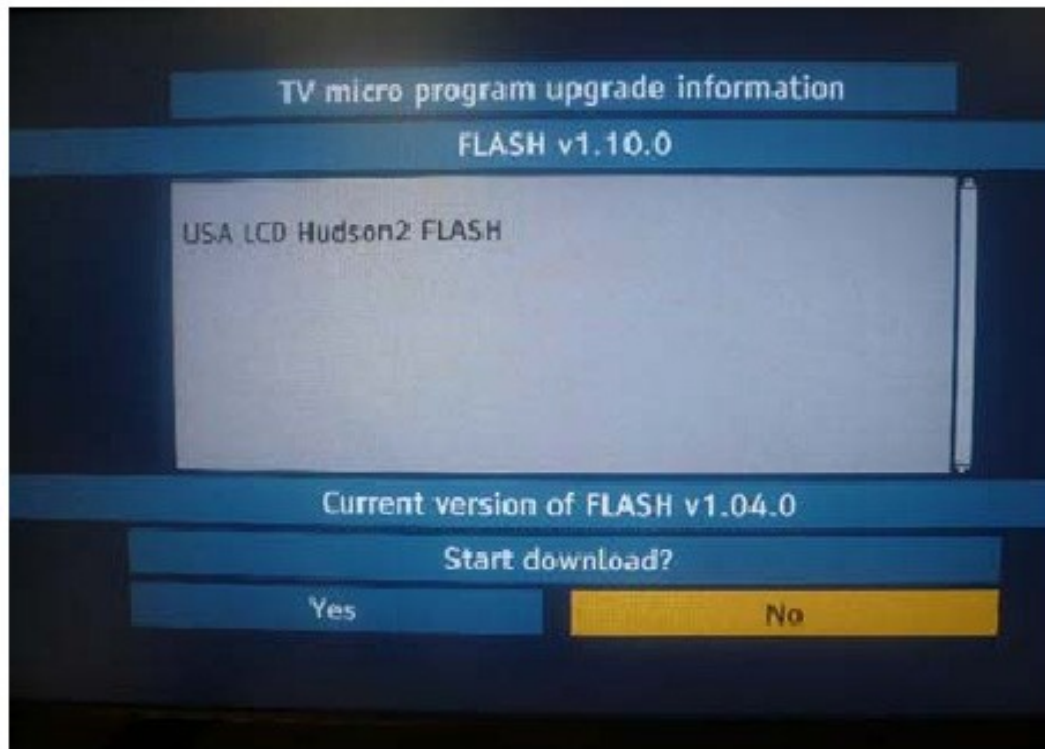


Fig.1

2. Using remote control's left/right arrow button, select YES to start the download. The screen will change as in Fig.2



Fig.2

COLLECTION OF LCD TELEVISION REPAIR TIPS

3. When upgrade was completed, the screen will change as in Fig.3

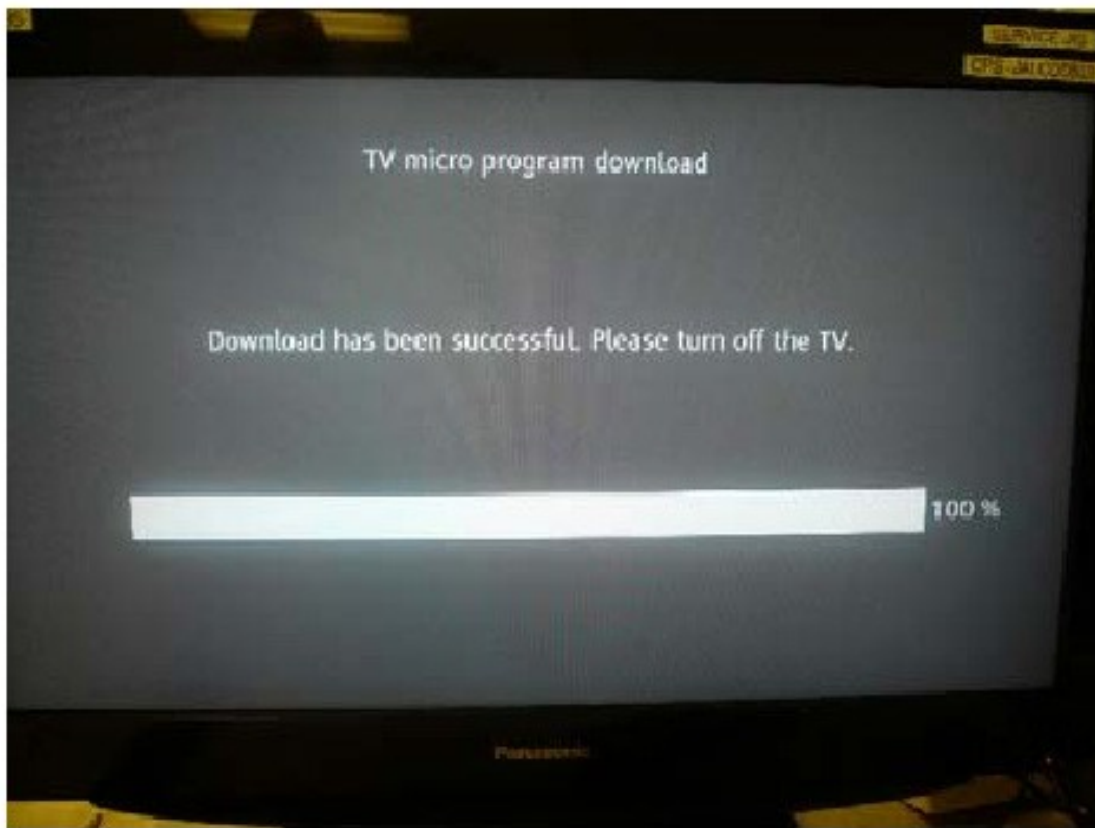


Fig.3

4. Unplug the TV from AC line and plug it back after several seconds. Power on the TV and it is back to normal now.

COLLECTION OF LCD TELEVISION REPAIR TIPS

PHILIPS

65) Model: Philips 32PF3320/10 Chassis LC4.5 EAA LCD TV

Symptom: "F" is displayed on screen

Repair/Solution:

TV is in factory mode. To quit the factory mode, press both "VOLUME" "-" keys and "PROGRAM" "-" for 5 seconds simultaneously.

66) Model: Philips Chassis BJ3.0E LA LCD TV

Symptom: Switches off for a second or two intermittently. Relay clicks and standby LED remains green. When the TV switches off intermittently with green LED lit, TV wills no sound or no picture.

Repair/Solution:

Please check the 27MHz KDS quartz crystal (SSB, item 1H00). If all yellow marked crystals bearing with a "5E", "5J" or "5K" batch number just direct replaced it. Also replace all the silver marked crystals bearing with a "6D" batch number.

67) Model: Philips 42PF7621/D10 LCD TV

Symptom: High pitched noise coming from LCD power supply

Repair/Solution:

Check or replace 5025, 5026 and 5027 on LCD power supply and glue them if necessary.

COLLECTION OF LCD TELEVISION REPAIR TIPS

68) Model: Philips 23MW9010/37 LCD TV

Symptom: No sound.

Repair/Solution:

Defective sound output IC7731 (AN7522).

69) Model: Philips 23PF9966/37 LCD TV

Symptom: Picture jitter if contrast function is used.

Repair/Solution:

Replace transistor 7563 on Scalar mainboard.

70) Model: Philips 42PF7621/D10 LCD TV

Symptom: Stuck in standby. TV switches to protection mode. Green LED flashes.

Repair/Solution:

Replace capacitors 2540 and 2544 (both 10nF). Change to both with 220nF.

71) Model: Philips Chassis BJ3.0E_LA LCD TV

Symptom: Switches off for a second or two intermittently.

Relay clicks and standby LED remains green. TV switches off intermittently with green LED on, no sound or picture.

Repair/Solution:

Check 27MHz KDS quartz crystal (SSB, item 1H00). Replace all yellow marked crystals (made in China) bearing a "5E", "5J" or "5K" batch number. Also replace all silver marked crystals (made in Taiwan) bearing a "6D" batch number. Note: Replace crystals with order code 242254301397.

POLAROID

72) Model: Polaroid FLM3232 LCD TV

Symptom: No startup.

Repair/Solution:

Replace Z9 zener diode with NTEPN4990 in the PSU.

COLLECTION OF LCD TELEVISION REPAIR TIPS

SAMSUNG

73) Model: Samsung LE27T51B LCD TV

Symptom: Dark frame with color stripes.

Repair/Solution:

Its looks like the unstable voltage problem. Check and replace UP4 (L1117DG) on T-CON board.

74) Model: Samsung LE32R73BD LCD TV

Symptom: No picture and no OSD menu. Backlight ok.

Repair/Solution:

Reflow LVDS socket on screen driver PCB and mainboard PCB.

75) Model: Samsung LE32R74BD LCD TV

Symptom: TV dead. Pulsating noise came from PSU and LED light flashes.

Repair/Solution:

Check schottky diode DM854 (MBRF1545CT) in PSU for short circuit.

76) Model: Samsung LN32A330J1DXZA, LN32A330J1NXZA LCD TV

Symptom: The TV takes longer to power on than normal.

The TV takes longer to power on than normal. You may hear several clicks while the TV attempts to power on.

Cause: The electrolytic in the capacitors on the power supply board over time will dry out causing the power supply to shut down during its initial power on cycle.

Repair/Solution:

Refer to the capacitor cross reference guide below for the list of the capacitors that should be replaced.

COLLECTION OF LCD TELEVISION REPAIR TIPS

TV Model	Side Label version	Capacitor for Service		
		Location	Spec	Part Number
LN32A330J1D	CN01, CK02, CJ03 CZ04, SQ05	CB852	25V 820uF	BN81-02021A
		CM851,CM852,CM860	35V 1000uF	BN81-03142A
		CM856	25V 1000uF	BN81-02020A
		CM858	25V 470uF	BN81-03132A
		CM861	10V 2200uF	BN81-03078A
	SS06	CB852	25V 1000uF	BN81-02020A
		CM851,CM852	35V 1000uF	BN81-03142A
		CM853,CM858	25V 1000uF	BN81-02020A
		CM859	25V 470uF	BN81-03132A

77) Model/s: Samsung LN40A650A1FXZA, LN46A650A1FXZA, LN40A750R1FXZC, LN46A750R1FXZA, LN40A750R1FXZA LCD TV

Symptom: Unit tries to start with melody but cycles off and back on.

Repair/Solution:

If the unit tries to turn on and makes the start-up melody but then immediately shuts off and starts again, unplug the LVDS cable and apply power again. If the set stays on, replace the T-Con board.

78) Model/s: Samsung LNT3242HX/XAA, LNS2651DX/XAA LCD TV

Symptom: Picture is lost; sound OK after MAIN PCB was replaced

Repair/Solutions:

If you get the symptoms after replacing MAIN PCB and made all correct setups in "OPTION BYTE":

- Lost picture after 5-10 minutes but sound OK, picture comes back if you restart the TV but just to be lost again after the same interval or
- Picture is lost intermittently every 10-20 sec. and comes back itself, again sound OK.

You may not have to come back with another Main PCB, this may be corrected just by moving the connection between inverter and SMPS on the SMPS board. If it was on A-CNM803 move it to S-CNM802 or vice versa from S-

COLLECTION OF LCD TELEVISION REPAIR TIPS

CNM802 to A-CNM803 on the SMPS board. If this is not working then use a new MAIN PCB. This may be applied to other LCD models too.

79) Model: Samsung LNS4041DX/XAA LCD TV

Symptom: Unit Continually Cycling On and Off. Set turns on and off in a continuous cycle. Play the melody each time.

Repair/Solutions: First, check the power supply voltages, if missing, replace the power PCB. Next unplug the lvds cable. If the set continues to cycle, replace the main pcb. If the cycling stops, replace the lcd panel. Part numbers are version dependent, so be sure to check the set's version.

80) Model: Samsung LNS4051DX/XAA LCD TV

Symptom: Clicking repeatedly TV will not turn on

Cure/Solutions:

Found 2 electrolytic 100uf at 16v capacitors on the 5v line C115 and C123 bad. Or replace the power supply.

81) Model: Samsung LNS4051DX/XAA LCD TV

Symptom: Dead Backlight Flashes On then Off.

Repair/Solution:

UNIT WOULD FLASH ON THEN OFF AND AUDIO WOULD WORK. YOU COULD SEE VIDEO WITH A FLASHLIGHT. SOMETIMES UNIT WOULD STAY ON AND RUN IF YOU CYCLED ON AND OFF MANY TIMES. FOUND BAD SOLDER CONNECTION ON IP BOARD TI801 ON PRIMARY SIDE. RESOLDERED AND CORRECTED PROBLEM.

COLLECTION OF LCD TELEVISION REPAIR TIPS

82) Model: Samsung LNS4692DX/XAA LCD TV

Symptom: No video TV but has backlight and audio. TV will not come on.

Repair/Solution:

Found pico fuse open at cp1 on the T-CON PCB. If shorted CP1 with a wire jumper, TV comes on and runs fine. Replace the Pico fuse or T-CON PCB.

83) Model/s: Samsung LNT3242HX/XAA, LNT3232HX/XAA LCD TV

Symptom: Can't power on.

Repair/Solution:

TV would not come on. Removed the back and as soon as we did the set came on. Found glue was around cables on the smps. Cleaned glue off and cleaned the terminals. Set operates normally.

84) Model: Samsung LNT3253HX/XAA LCD TV

Symptom: After a few minutes when TV warms-up picture becomes distorted

Repair/Solution:

10-15 minutes after you turned on the unit panel warms-up and picture becomes distorted. If you just push the TV's frame picture becomes even more distorted. On the back of the panel the CONTROL ASIC area is very hot. Replace the panel to fix the problem.

85) Model/s: Samsung LNT4065FX/XAA, LNT4665FX/XAA, LNT5265FX/XAA, LNT4061FX/XAA, LNT4661FX/XAA LCD TV

Symptom: Blue screen without signal. If provide with signal the blue screen will flash white short horizontal lines.

Repair/Solution:

Refit or replace LVDS cable, check if the cable not strangled by the metal cover and loosen up the screws of the cover.

COLLECTION OF LCD TELEVISION REPAIR TIPS

86) Model: Samsung LNT4665FX/XAA LCD TV

Symptom: Brightness lost after replaced MAIN PCB.

Repair/Solution:

Because MAIN PCB BN94-01199E is designed to work with both models LNT4665FX/XAA and LNT4661FX/XAA when you replaced the board is possible to lost the brightness. Go in SERVICE MODE and turn value LVDS BYTE from 8 to 10.

87) Model/s: Samsung LNT5271FX/XAA, LNT4671FX/XAA LCD TV

Symptom: TV is cycling, the red LED light blinking and the relay is cycling sometime TV will come on.

Repair/Solution:

TV is cycling, the red LED light blinking and the relay is cycling sometime TV will come on. Even the Main board replaced, did not fix. This was a used unit, found cable from the main board to the side AV jack was reversed, is not labelled as to direction of use. This cable if reversed will be hot to the touch. Found by removing and re-plugging and changing direction of cable TV worked. This was tried on both model numbers with the same result.

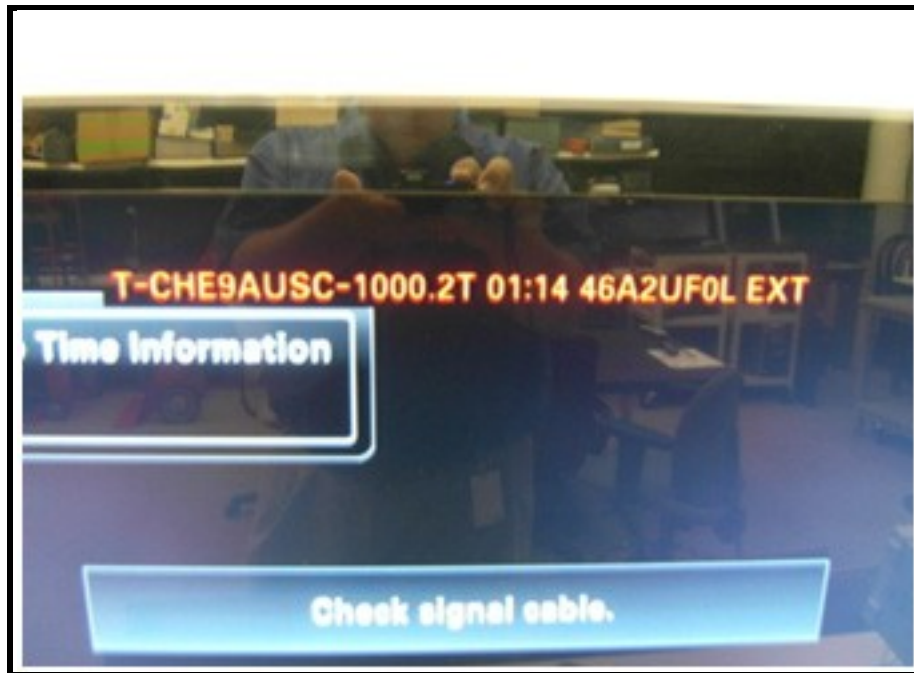
88) Model/s: Samsung

LN32B360C5DXZA, LN32B530P7FXZA, LN32B650T1FXZA, LN32B460B2DXZA, LN32B540P8DXZA, LN32B550K1FXZA, LN32B640R3FXZA, LN32B457C6HXZA, LN32B450C4HXZA, LN37B457C6HXZA, LN37B530P7FXZA, LN37B650T1FXZA, LN37B550K1FXZA, LN40B457C6HXZA, LN40B550K1HXZA, LN40B500P3FXZA, LN40B550K1FXZA, LN40B650T1FXZA, LN40B530P7FXZA, LN40B530P7NXZA, LN40B750U1FXZA, LN40B540P8FXZA, LN40B610A5FXZA, LN40B630N1FXZA, LN40B640R3FXZA, LN46B650T1FXZA, LN46B530P7NXZA, LN46B530P7FXZA, LN46B550K1FXZA, LN46B610A5FXZA, LN46B540P8FXZA, LN46B630N1FXZA, LN46B640R3FXZA, LN46B750U1FXZA, LN52B550K1HXZA, LN52B610A5FXZA, LN52B550K1FXZA, LN52B540P8FXZA, LN52B530P7FXZA, LN52B630N1FXZA, LN52B750U1FXZA, LN55B640R3FXZA,

COLLECTION OF LCD TELEVISION REPAIR TIPS

LN55B650T1FXZA LCD TV

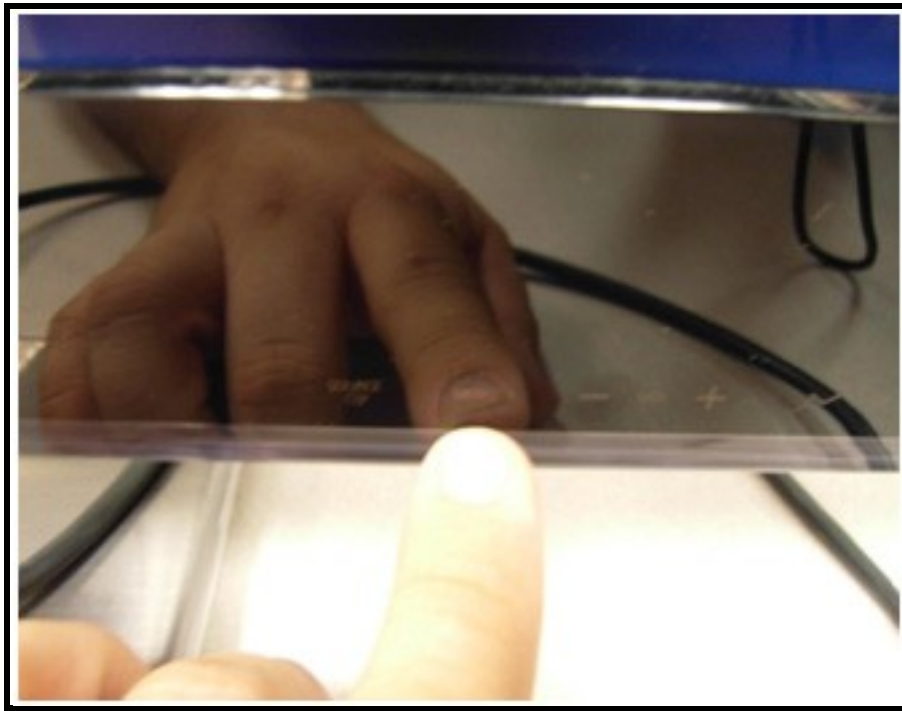
Symptom: Firmware blinking in Red at the top of the screen



Repair/Solution: Problem - After changing the main board, I'm now stuck with the firmware blinking in RED print at the top of the screen.

Solution: The unit is stuck in aging mode. To exit, simply hit the menu button on the TV itself.

COLLECTION OF LCD TELEVISION REPAIR TIPS



89) Model/s: Samsung

LN32B360C5DXZA, LN32B530P7FXZA, LN32B460B2DXZA, LN32B540P8DXZA, LN32B550K1FXZA, LN37B530P7FXZA, LN37B550K1FXZA, LN40B550K1FXZA, LN40B530P7FXZA, LN40B530P7NXZA, LN40B530P7FXZC, LN40B540P8FXZA, LN46B530P7NXZA, LN46B530P7FXZA, LN46B550K1FXZA, LN46B540P8FXZA

Symptom: Flickering on the screen intermittently

When the unit is connected via HDMI to a Scientific Atlanta cable set top box set in by pass mode for resolutions 480p and 720p a flickering will occur.

Repair/Solution:

Change the cable box to a fixed resolution. OR have the customer install the latest TV firmware which can be located on [samsung.com](http://www.samsung.com).

COLLECTION OF LCD TELEVISION REPAIR TIPS

90) Model/s: Samsung

LN46A550P3FXZA, LN46A650A1FXZA, LN46A530P1FXZA, LN46A750R1FXZA, LN46A860S2FXZA, LN46A950D1FXZA, LN46A540P2FXZA, LN46A850S1FXZA, LN46A630M1FXZA, LN46A580P6FXZA, LN52A530P1FXZA, LN52A750R1FXZA, LN52A650A1FXZA, LN52A550P3FXZA, LN52A630M1FXZA, LN52A860S2FXZA, LN52A850S1FXZA, LN52A540P2FXZA, LN40A530P1FXZA, LN40A450C1DXZA, LN40A330J1DXZA, LN40A550P3FXZA, LN40A650A1FXZA, LN40A630M1FXZA, LN40A540P2FXZA LCD TV

Symptom: Unit cycles on/off during start-up.

Repair/Solution:

If the unit tries to turn on but begins to cycle on and off before any video is displayed and all of the SMPS voltages are good, disconnect the LVDS cable at the T-Con board. If the set starts and the backlights come on, replace the T-Con board. If the set does not start, disconnect the LVDS cable at the main board. If the set starts, replace the LVDS cable. If the set still does not start-up, replace the main board.

91) Model/s: Samsung

LN32A330J1DXZA, LN32A450C1DXZA, LN32A650A1FXZA, LN32A550P3FXZA, LN32A540P2DXZA, LN32A330J1NXZA, LN32A300J1DXZA, LN40A530P1FXZA, LN40A450C1DXZA, LN40A750R1FXZA, LN40A330J1DXZA, LN40A550P3FXZA, LN40A540P2FXZA, LN40A500T1FXZA, LN46A530P1FXZA, LN46A860S2FXZA, LN46A750R1FXZA, LN46A550P3FXZA, LN46A650A1FXZA, LN46A950D1FXZA, LN46A540P2FXZA, LN46A500T1FXZA, LN46A850S1FXZA, LN46A630M1FXZA, LN46A850S1FXZX, LN46A580P6FXZA, LN52A530P1FXZA, LN52A750R1FXZA, LN52A650A1FXZA, LN52A550P3FXZA, LN52A630M1FXZA, LN52A860S2FXZA, LN52A850S1FXZA, LN52A540P2FXZA, LN52A580P6FXZA

Symptom: Auto-shutdown on 2008 LCD TV's.

Repair/Solution:

Upon inspections of 2008 LCD TV's we have found that the LVDS (ribbon cable) can cause an auto shut down. Even if the LVDS cable doesn't look defective try changing it anyway and retest the TV. It is a good practice to carry a few extra LVDS cables for such testing circumstances.

COLLECTION OF LCD TELEVISION REPAIR TIPS

92) Model/s: Samsung

LN32B360C5DXZA, LN32B530P7FXZA, LN32B650T1FXZA, LN32B460B2DXZA, LN32B540P8DXZA, LN32B550K1FXZA, LN32B640R3FXZA, LN32B457C6HXZA, LN32B450C4HXZA, LN32B540P8DUZA, LN32B450C3HXZA, LN32B460B2DUZA, LN32B360C5DUZA, LN32B550K1FUZA, LN32B530P7FUZA, LN32B450C3HUZA, LN40B530P7FUZA, LN40B550K1FUZA, LN40B457C6HXZA, LN40B550K1HXZA, LN40B610A5FUZA, LN40B640R3FUZA, LN40B650T1FUZA, LN40B630N1FUZA, LN40B540P8FUZA, LN40B500P3FXZA, LN40B550K1FXZA, LN40B650T1FXZA, LN40B530P7FXZA, LN40B530P7NXZA, LN40B750U1FXZA, LN40B540P8FXZA, LN40B630N1FXZA, LN40B640R3FXZA, LN52B550K1HXZA, LN52B610A5FXZA, LN52B550K1FXZA, LN52B540P8FXZA, LN52B530P7FXZA, LN52B630N1FXZA, LN52B750U1FXZA LCD TV

Symptom: Backlight Failure Testing.

Repair/Solution:

Backlight failures can be partial or full failure check the backlight supply voltage (refer to service manual). If supply voltage is present, use a flashlight behind the television and shine a light through the panel. If the video is working you will see it.

93) Model: Samsung LNS4051DX/XAA LCD TV

Symptom: Dead backlight flashes on then off.

Repair/Solution:

Unit would flash on then off and audio would work. You could saw video with a flashlight. Sometimes unit would stay on and run if you cycled on and off many times. Found bad solder connection on IP board TI801 on primary side. Re-soldered and problem solved.

COLLECTION OF LCD TELEVISION REPAIR TIPS

94) Model/s: Samsung LNT4065FX/XAA, LNT4665FX/XAA, LNT5265FX/XAA, LNT4061FX/XAA, LNT4661FX/XAA LCD TV

Symptom: Half screen is purple colour.

Repair/Solution:

Half screen is purple color. That's mean LCD panel controller board is defective. Panel needs to be replaced.

95) Model/s: Samsung

LNT4069FX/XAA, LNT4066FX/XAA, LNT4669FX/XAA, LNT3255HTX/XAA, LNT375HAX/XAA, LNT4042HX/XAA, LNT325HAX/XAA, LNT405HAX/XAA, LNT2353HTX/XAA, LNT3753HX/XAA, LNT2653HTX/XAA, LNT3242HTX/XAA, LNT3253HTX/XAA, LNT4042HTX/XAA, LNT4053HTX/XAA, LNT4071FX/XAA, LNT4671FX/XAA, LNT5271FX/XAA, LNT4642HX/XAA, LNT466FX/XAA, LNT4065FX/XAA, LNT4665FX/XAA, LNT5265FX/XAA, LNT2632HX/XAA, LNT2642HX/XAA, LNT2653HX/XAA, LNT3232HX/XAA, LNT3242HX/XAA, LNT3253HX/XAA, LNT3732HX/XAA, LNT4032HX/XAA, LNT4053HX/XAA, LNT4061FX/XAA, LNT4661FX/XAA LCD TV

Symptom: Intermittent LCD Video Troubleshooting.

Repair/Solution:

Troubleshooting intermittent video problems can be time consuming, but these tips may help narrow down the cause of an intermittent video problem.

The very first thing to do is to make sure the customer does not have OSD. They can verify this by just pressing Menu or Volume on their TV remote control. If they do have OSD, then the problem is most likely in the source and not the TV.

The next step when encountering an intermittent video problem is to find out if the backlights are on when the set loses video. You can probably obtain this information from the customer before you schedule the call. Ask if they noticed if the screen is completely black or if it is lit up slightly when the video goes out. They may be able to notice it better if they stand at an angle to the TV and turn it on or off and see if there is any change in brightness.

If the backlights are out, you need to know if the set ever has video when they turn it on, or does it go out after they have had the set on for a period of time. If the set occasionally will not have backlights when it is first turned on, suspect

COLLECTION OF LCD TELEVISION REPAIR TIPS

the panel or power supply/IP board. If the set has video for a while and then loses the backlights, suspect a power supply/IP board or main board. Typically the panel will cause a no backlight at turn on, while the power supply and Main Board will cause the backlights to go out after a period of time. If the set has backlights when first turned on and the lights change their brightness in several steps before quickly going out, suspect the IP board.

If the backlights are on when the set loses video after it has been on for a while, most likely the LVDS cable is defective. If the set has backlights but no video when it is first turned on, the T/Con or Main Board would probably be at fault.

Always check the simple things first, like a LVDS cable that is not plugged in properly or a power connector to the panel being loose.

There are exceptions to every rule, but this generally should help with narrowing down no video in LCD sets.

96) Model/s: Samsung LN32A450C1DXZA, LN32A450C1HXZA, LN32A450C3HXZA, LN32A330J1DXZA, LN32A330J1NXZA LCD TV

Symptom: Video will intermittently turn mostly white.

White screen with a faint image of OSD and video is in the background. Video will intermittently turn mostly white with the OSD barely visible in the background. Even a black image or when the panel should not be showing any video, it is white. I found that one of the sub-boards inside the panel, the boards that the ribbon cable from the T-Con connect to, are not seated properly and the larger SMD capacitors on the board are intermittently making contact with the metal frame of the set, effectively creating a short to ground.

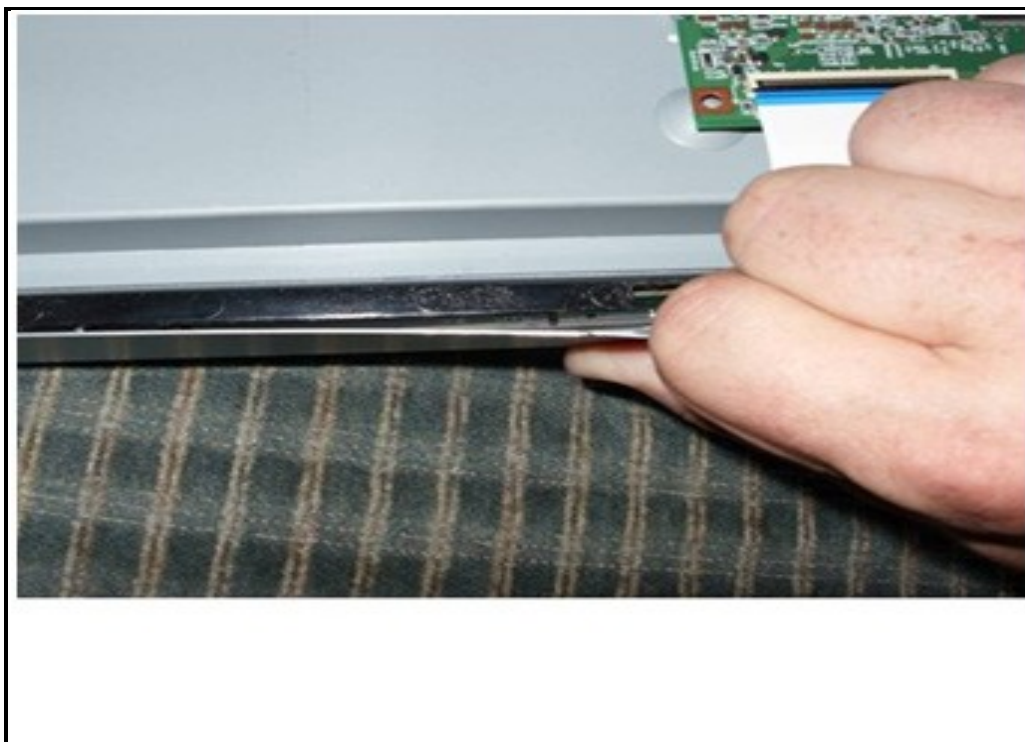
This is one of the panels that are mounted upside down, so the stand mounts just below and behind the panel frame. Any slight pressure from the stand can cause the frame to make contact. In many cases, the TV can be slightly flexed to make this issue occur.

Here, just beside a T-Con ribbon cable, you can see that the sub-board is not seated properly, and is in fact bowing towards the outer frame.

COLLECTION OF LCD TELEVISION REPAIR TIPS

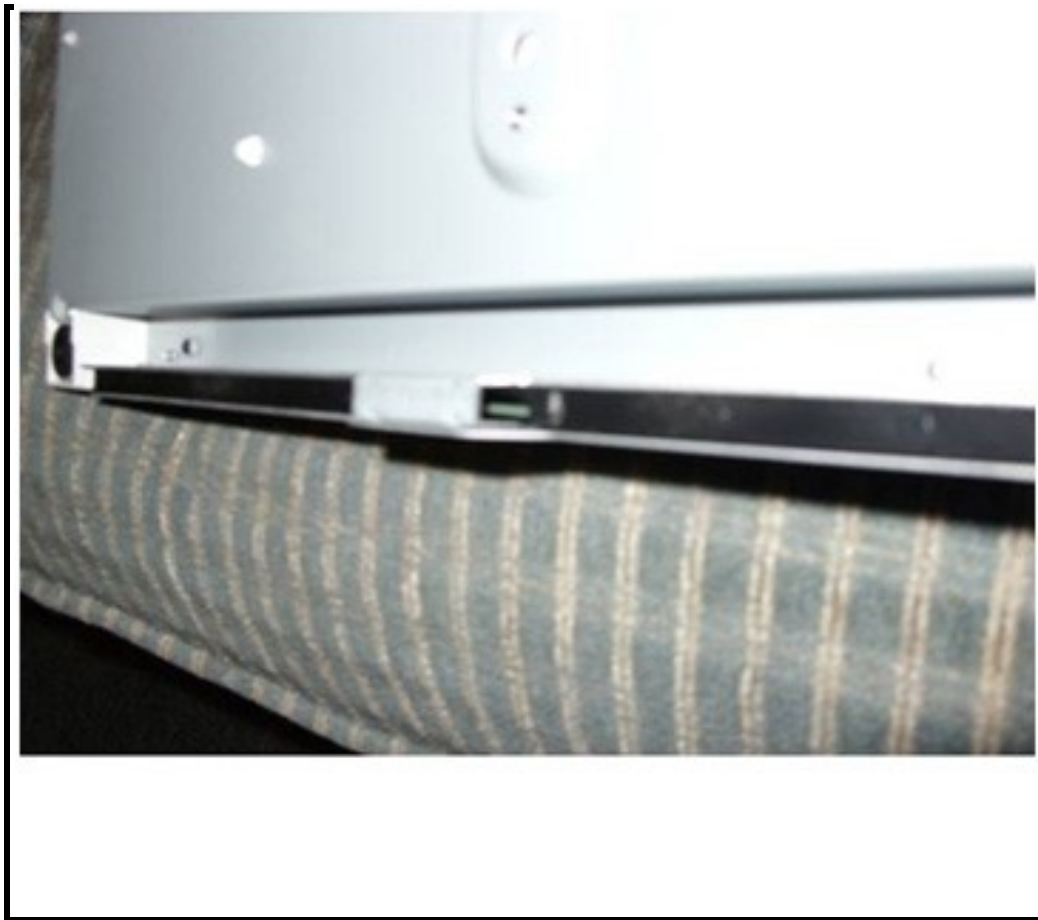


Pulling the frame out slightly, you can see one of the SMD capacitors that can make connection with the frame.



COLLECTION OF LCD TELEVISION REPAIR TIPS

Here you can see that the sub-board is nearly resting against the outer frame.



97) Model/s: Samsung LNS4695DX/XAA, LNS4696DX/XAA, LNS4096DX/XAA, LNS4095DX/XAA LCD TV

Symptom: Poor or Intermittent Video.

Repair/Solution:

Check the LVDS cable where it connects to the panel interface board. Be sure that the cable does not have any glue on it. On occasion, the glue can cause a poor connection if it gets into the connector. Remove glue or replace the LVDS cable with BN39-00726A.

COLLECTION OF LCD TELEVISION REPAIR TIPS

98) Model/s: Samsung LN32A330J1DXZA, LN32A450C1DXZA, LN32A550P3FXZA, LN32A540P2DXZA, LN32A330J1NXZA, LN32A450C1HXZA, LN32A450C3HXZA, LN32A300J1DXZA LCD TV

Symptom: Standby light is on, flashes once briefly then unit attempts to turn on

Repair/Solution:

If the unit will not turn on, but the red standby LED is on and flashes once quickly when the power button is pressed on the remote or the TV, the 2200uf 10v filter capacitor on the SMPS has failed. This capacitor is located in the upper right side of the power supply close to the cable that connects the main board. Visual inspection will normally show that it has a swollen top. Replace capacitor and inspect the others in the filter stage to restore operation.

99) Model/s: Samsung LNT4061FX/XAA, LN32A450C1DXZC, LN32A550P3FXZC, LN32A550P3FXZX, LN32A450C1DXZX, LN32A650A1FXZA, LN32A450C1XZD, LN32A450C1DXZA, LN32A540P2DXZA, LN32A450C1XZP, LN32A550P3RXZD, LN40A530P1FXZA, LN40A530P1FXZX, LN40A450C1HXZX, LN40A450C1DXZA, LN40A750R1FXZA, LN40A450C1DXZX, LN40A530P1FXZC, LN40A550P3FXZC, LN40A650A1FXZC, LN40A550P3FXZX, LN40A750R1FXZC, LN40A330J1DXZX, LN40A650A1FXZX, LN40A450C1XZD, LN40A450C1DXZC, LN40A330J1DXZA, LN40A550P3FXZA, LN40A650A1FXZA, LN40A750R1FXZX, LN40A550P3RXZD, LN40A330J1XZD, LN40A630M1FXZA, LN40A540P2FXZA, LN40A650A2RXZD, LN40A630M1FXZC, LN40A630M1FXZX, LN40A610A3RXZD, LN40A500T1FXZA, LN40A330J1XZP, LN40A450C1XZP, LN40A650A1RXZP, LN40A610A1RXZD, LN40A650A1FXZD LCD TV

Symptom: Troubleshooting Inverter PCB boards

Repair/Solution:

The inverter PCB is the power supply for the Cold Cathode Fluorescent tubes. The inverter acts exactly like the ballast used in a standard fluorescent light fixture. In the case of an LCD TV, 24 volts from the power supply is applied to a switch mode power supply (SMPS). The SMPS outputs ~1000 Volts to energize the bulbs then the voltage drops to ~ 500 volts for run operation. The SMPS switching frequency is around 90 KHz.

COLLECTION OF LCD TELEVISION REPAIR TIPS

The first step for verifying inverter board operation is to confirm the 24 volt supply is present. An oscilloscope can also be used to verify the SMPS circuit is oscillating. Simply holding the oscilloscope probe in the area of the switching transformer will show screen activity if the switching action is taking place. Measuring the SMPS output with standard equipment is not recommended as this is high voltage and at a high frequency.

100) Model/s: Samsung LN40A650A1FXZA, LN46A650A1FXZA, LN40A750R1FXZC, LN46A750R1FXZA, LN40A750R1FXZA LCD TV

Symptom: Unit tries to start with melody but cycles off and back on.

Repair/Solution:

If the unit tries to turn on and makes the start-up melody but then immediately shuts off and starts again, unplug the LVDS cable and apply power again. If the set stays on, replace the T-Con board.

101) Model/s: Samsung LNT4071FX/XAA, LNT4671FX/XAA, LNT5271FX/XAA LCD TV

Symptom: Video Stuttering or Hesitation

Repair/Solution:

The customer may complain that the video has a stutter or hesitation when viewing regular programming, either standard definition or high definition.

To fix, go into the customer menu, select Picture, then scroll to Auto Motion Plus 120Hz and select Off.

This enhancement circuit works for some movies, but can introduce severe hesitations and ghosting on regular programming. The customer should also be informed that this does not affect the 120Hz operation of the panel. The panel operates at 120Hz regardless of this setting.

COLLECTION OF LCD TELEVISION REPAIR TIPS

102) Model/s: Samsung LN52A650A1FXZA, LN40A650A1FXZA, LN46A650A1FXZA, LN52A650A1FXZC, LN46A650A1FXZC LCD TV

Symptom: Will not turn on, cycles on and off with start-up melody, no backlights

Repair/Solution:

If the set will try to turn on and the start-up melody sounds but no backlight appears and the set cycles off and on every 5 to 10 seconds, unplug the LVDS cable from the T-Con/FRC board. If the set then runs and the backlights come on and stay on, replace the defective T-Con/FRC board.

103) Model/s:

LNT4069FX/XAA, LNT4066FX/XAA, LNT4669FX/XAA, LNT4071FX/XAA, LNT4671FX/XAA, LNT5271FX/XAA, LNT4065FX/XAA, LNT4665FX/XAA, LNT5265FX/XAA, LNT4061FX/XAA, LNT4661FX/XAA

Symptom: Unit cycles on and off several times before starting.

Repair/Solution:

If the unit will cycle on and off several times before turning on and then playing fine, check the power supply carefully for filter capacitors with bulged tops. Replace the capacitors or power supply to correct the issue.

104) Model: Samsung 32 Inches LCD TV

Asia	Europe/CIS	America
LA32R71B1X	LE32N71BX	LN32R71BC
LA32R71B2X	LE32N73BDX	LN32R71BDX
LA32R71BDX	LE32R71BHx	LN32R71Bx
LA32R71BM	LE32R71BS	LN32R71WDX
LA32R71BS	LE32R71Bx	LN32T71BDX
LA32R71Bx	LE32R71Wx	LN32T71Bx
LA32R71WDX	LE32R72BS	LNS3238DX
LA32R71WM	LE32R72Bx	LNS3241DX
LA32R71WS	LE32R73BDX	LNS3251DX
LA32R71Wx	LE32R74BDX	LNS3252DX
LA32S71B1X	LE32R75Bx	LNS3292DX
LA32S71B2X	LE32R76Bx	LNS3296DX
LA32S71B3X	LE32R77BDX	
LA32S71B4X	LE32S66BDX	
LA32S71BM	LE32S71BS	
LA32S71BS	LE32S71Bx	
LA32S71Bx	LE32S72Bx	
LA32S72Bx	LE32S73BDX	
	LE32S74BDX	

COLLECTION OF LCD TELEVISION REPAIR TIPS

Symptom: Hissing or Hum noise of the SMPS in 32 inches LCD TV

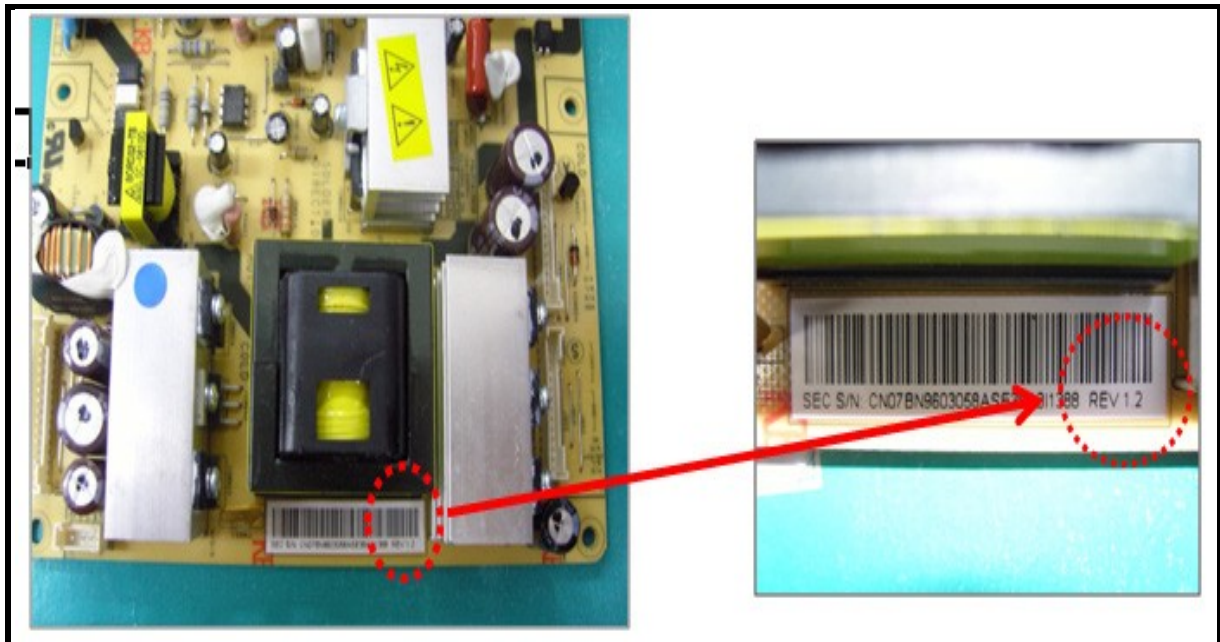
There may be a sort of hissing noise in the SMPS for 32" LCD TV. The noise occurs when the set is in the stand by condition. The SMPS code is BN96-03057A and defective SMPS version is the "REV 1.1".

Repair/Solution:

Replace the SMPS to new version (V1.2 or latest version).

	OLD	NEW
Part Code	BN96-03057A	BN96-03057A
Version	~ REV 1.1	REV 1.2 ~
RS857	1K Ω	470 Ω
CS854	221	105

Part code	Spec
2007-000931	470ohm,5%,1/8W,TP,2012
2203-002793	1000nF,+80-20%,25V,Y5V,2012



COLLECTION OF LCD TELEVISION REPAIR TIPS

105) Model: Samsung 26, 32 & 37 Inches LCD TV Year 2009 Europe models

[26"]	[32"]	[37"]
LE26B450C4W	LE32B457C6H LE32B550A5W	LE37B530P7W LE37B551A6P
LE26B455C4W	LE32B450C4H LE32B551A6P	LE37B535P7W LE37B551A6W
LE26B457C6H	LE32B451C4H LE32B551A6W	LE37B650T2P LE37B555A5P
LE26B450C4H	LE32B652T4P LE32B555A5P	LE37B650T2W LE37B555A5W
LE26B460B2W	LE32B652T4W LE32B555A5W	LE37B651T3P LE37B556A6P
LE26B465B2W	LE32B653T5P LE32B556A6P	LE37B651T3W LE37B556A6W
LE26B350F1W	LE32B653T5W LE32B556A6W	LE37B652T4P LE37B570A5S
LE26B355F1W	LE32B657T4P LE32B553M3P	LE37B652T4W LE37B579A5S
	LE32B657T4W LE32B553M3W	LE37B653T5P LE37B553M3P
	LE32B658T5P LE32B554M2P	LE37B653T5W LE37B553M3W
	LE32B658T5W LE32B554M2W	LE37B655T2P LE37B554M2P
	LE32B650T2P LE32B557M2P	LE37B655T2W LE37B554M2W
	LE32B650T2W LE32B557M2W	LE37B656T3P LE37B557M2P
	LE32B651T3P LE32B558M3P	LE37B656T3W LE37B557M2W
	LE32B651T3W LE32B558M3W	LE37B657T4P LE37B558M3P
	LE32B655T2P LE32B550M2H	LE37B657T4W LE37B558M3W
	LE32B655T2W LE32B350F1W	LE37B658T5P LE37B457C6H
	LE32B656T3P LE32B355F1W	LE37B658T5W LE37B550M2H
	LE32B656T3W	LE37B550A5P
	LE32B550A5P	LE37B550A5W

Symptom: No Power, No picture or no backlight.

Cause: DP805 Diode (MUR360).

Repair/Solution:

Change DP805 from MUR360 to 31GF6 diode on IP boards.

=> MUR360 risk range: 0907*/0908*/0909* marked on diode.



Applicable IP-Boards	
BN44-00259A	BN44-00262A
BN44-00260A	BN44-00289B
BN44-00261A	BN44-00291A

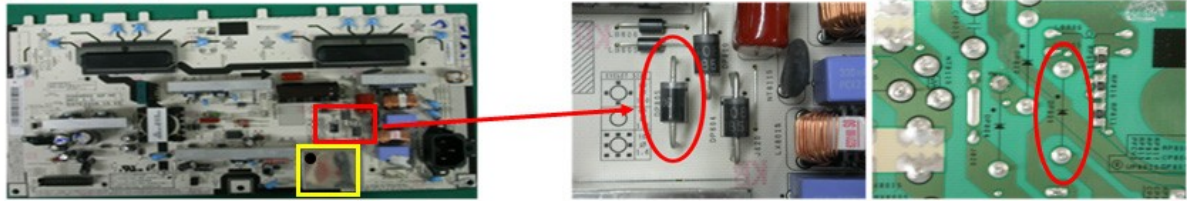
✳ **New Diode part code : 0402-001918 (31GF6)**

1. Change MUR360 Diode to 31GF6 Diode. (Red mark)

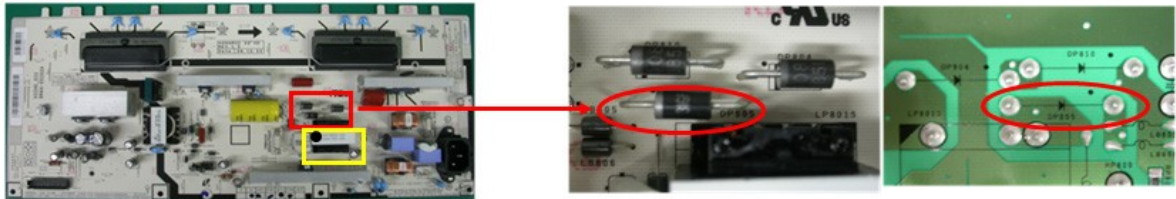
COLLECTION OF LCD TELEVISION REPAIR TIPS

2. Marking a dot on yellow box after changing this diode.

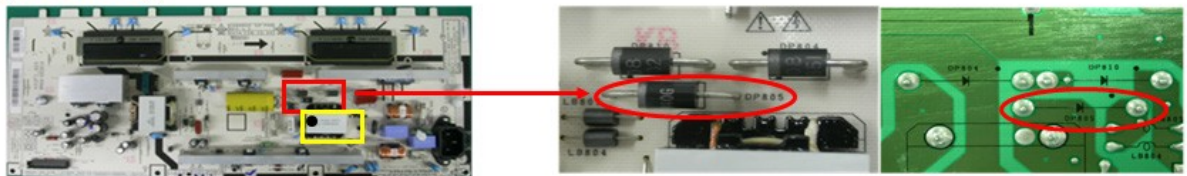
[BN44-00259A]



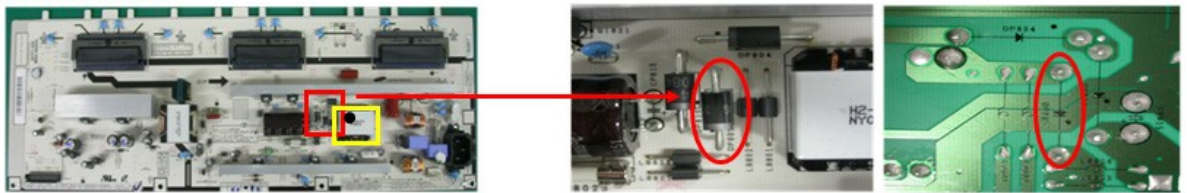
[BN44-00260A]



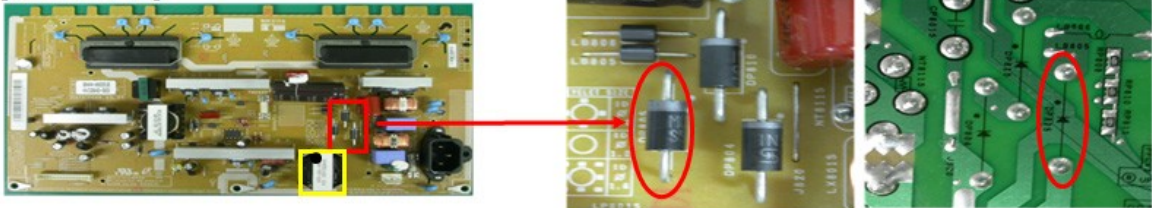
[BN44-00261A]



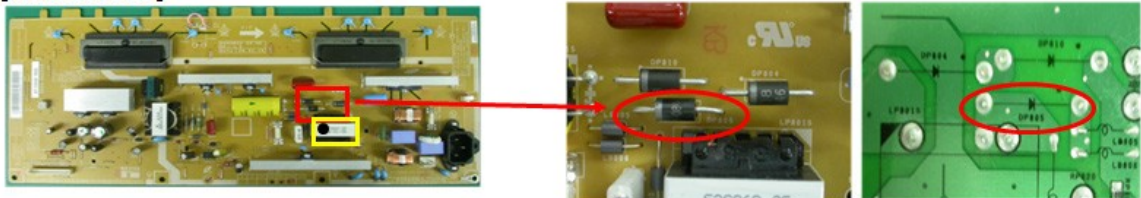
[BN44-00262A]



[BN44-00291A]



[BN44-00289B]



COLLECTION OF LCD TELEVISION REPAIR TIPS

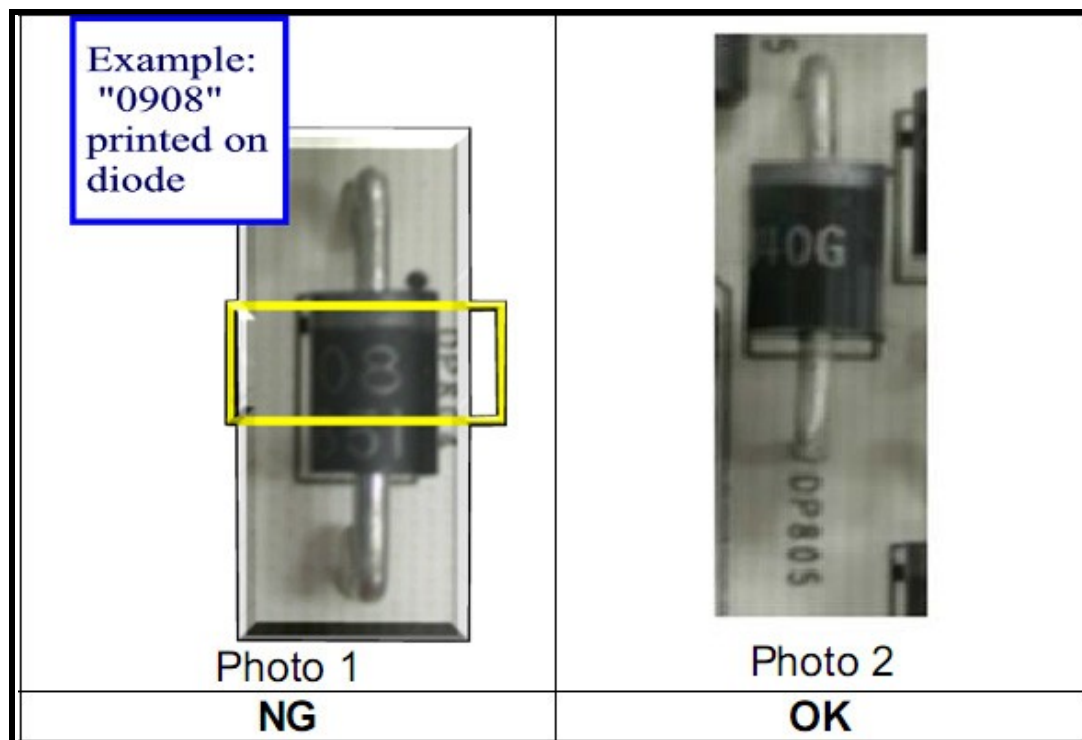
106) Model/s: Samsung LN26B460B2DXZA; LN26B360C5DXZA;
LN26B457C6HXZA; LN32B460B2DXZA; LN32B360C5DXZA;
LN32B540P8DXZA; LN32B457C6HXZA; LN32B530P7FXZA;
LN32B550K1FXZA; LN37B530P7FXZA; LN37B550K1FXZA;
LN37B650T1FXZA

Symptom: No Backlight but sound ok.

TV will power up but have no backlight operation (No display). Sound is ok.

Procedure:

1. Verify that the TV is within the serial number range by checking the ninth digit in the serial number (i.e. AZ4D3CTS**5** Ninth digit is a 5).
2. If the digit is 4 or 5, check the number on the diode itself to verify whether it has already been replaced.
3. If the diode has "0907", "0908" or "0909" on its case (refer to photos 1 & 2), replace with new (Part number 0402-001415).



Verify the cause of the symptom by measuring (in circuit) across the diode (location DP805) (see photos 3 through 6). If the resistance measures between 500 and 600 ohms, the diode is good and therefore the symptom is being caused

COLLECTION OF LCD TELEVISION REPAIR TIPS

by a different reason. If the resistance measurement approaches zero ohms (shorted) the diode is defective and needs to be replaced using part number 0402-001415.

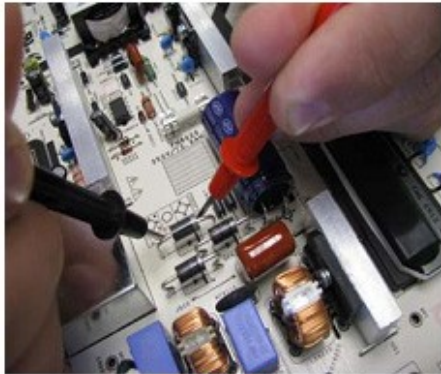


Photo 3

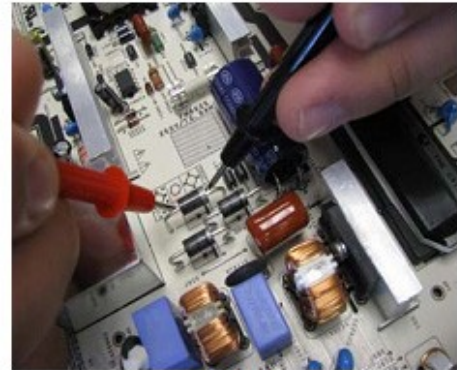


Photo 4

Check DP805 front to back resistance using the diode check setting on the DMM.



Photo 5

Forward/reverse (in circuit) resistance should read 500~600ohms



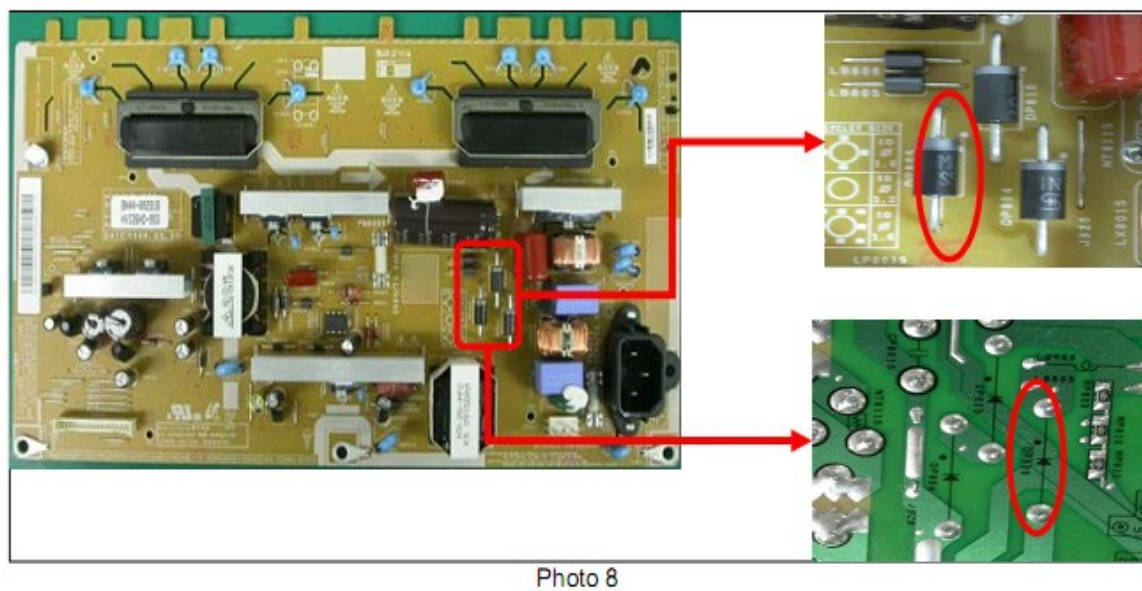
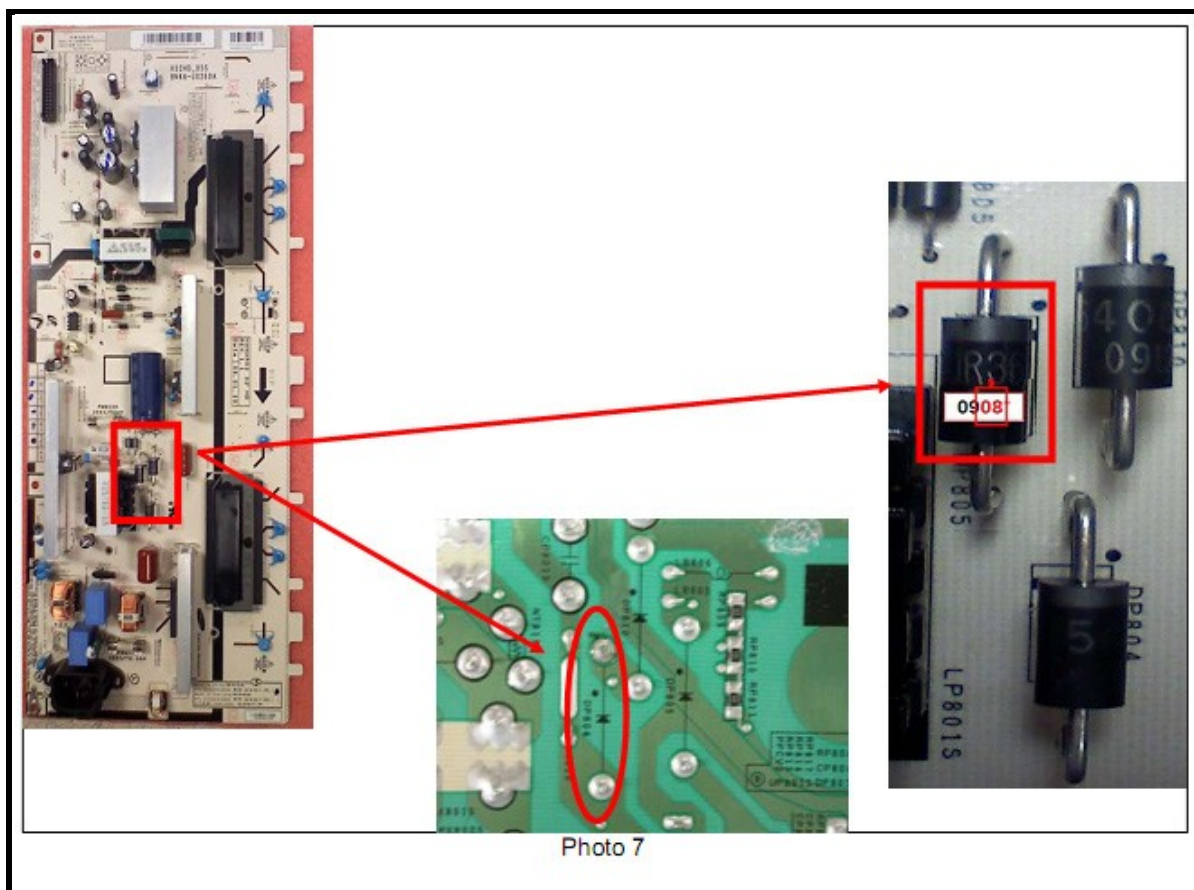
Photo 6

Defective diode will read approximately zero.

Repair/Solution:

There are two versions of the IP board with different physical layouts (refer to photo 7 and 8 for part location) using the same diode type. Replace the diode using standard soldering methods for a lead-free application. If the diode is not available, order the IP Board.

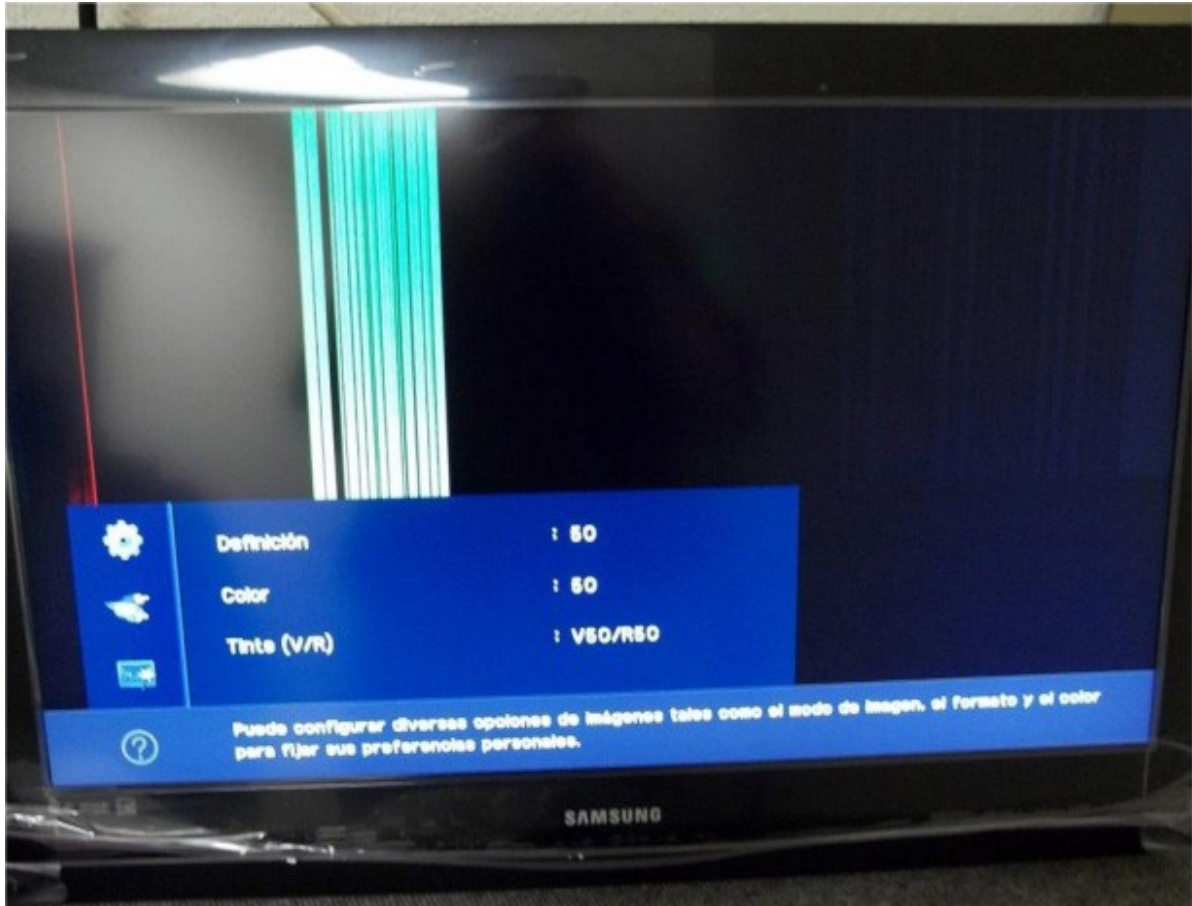
COLLECTION OF LCD TELEVISION REPAIR TIPS



COLLECTION OF LCD TELEVISION REPAIR TIPS

107) Model: Samsung LN32C350D1DXZA LCD TV

Symptom: Multiple Vertical lines.



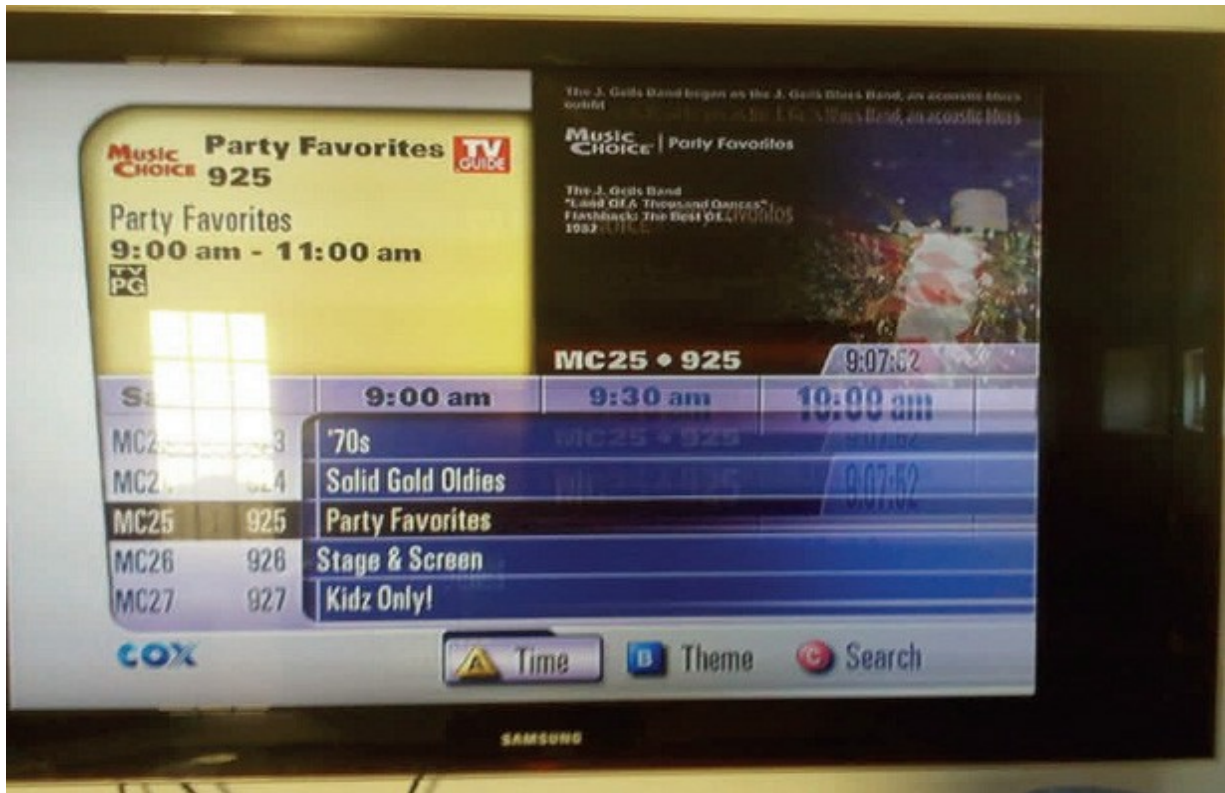
Repair/Solution:

Try to call out the OSD Menu, the multiple vertical lines that do not go through the OSD menu. If the symptom does not affect the OSD menu (as shown above) or does not appear in the test picture, replace the mainboard only. Do not replace the LVDS or T-Con board or the LCD Panel.

COLLECTION OF LCD TELEVISION REPAIR TIPS

108) Model: Samsung LN-52A850 LCD TV

Symptom: The image breaks up or doubles images on the right side of the screen.



Repair/Solution:

Replace T-CON board and problem solved.

109) Model: Samsung LN46B530P7NXZA LCD TV

Symptom: There is colour distortion on objects or people's faces.



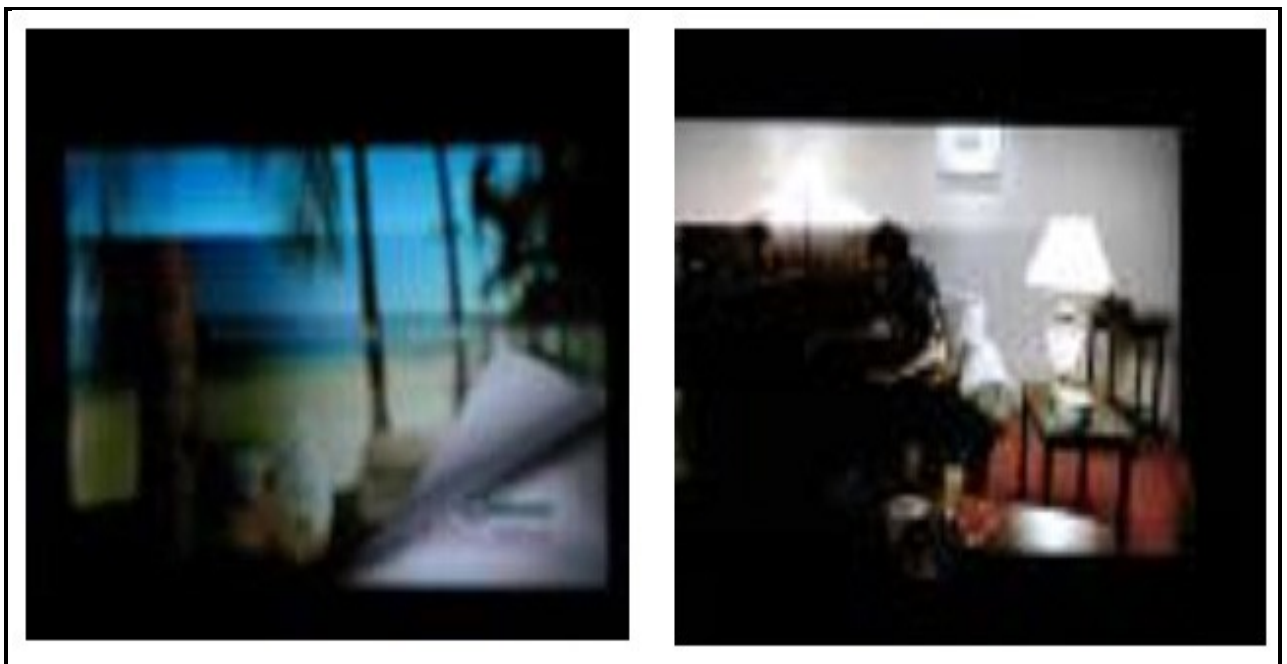
COLLECTION OF LCD TELEVISION REPAIR TIPS

Repair/Solution:

The LVDS cable can cause this if it isn't seated correctly. Check the position of the LVDS cable and the contacts. If it is seated correctly, replace the LVDS cable.

110) Model: Samsung LNT4661FX/XAA LCD TV

Symptom: Half of the screen is black or purple on all inputs.



Repair/Solution:

When call out the OSD menu, the problem also affects the OSD menu, replace the LCD panel.

COLLECTION OF LCD TELEVISION REPAIR TIPS

111) Model: Samsung LNT5271FX LCD TV

Symptom: Left side of the screen is dark. The right side of the screen have horizontal lines with distorted video.



Repair/Solution:

The symptom also affects the OSD Menu, so replace the T-CON board then problem solved.

COLLECTION OF LCD TELEVISION REPAIR TIPS

SHARP

112) Model: Sharp LC32P55E LCD TV

Symptom: Dead after start-up. Bang-noise was heard before.

Repair/Solution:

Replace R751 (0.1R/2W), IC704, D762, D725 and C725 (470pF/3K) in PSU.

113) Model: Sharp LC32P55E LCD TV

Symptom: Red LED light appears for a seconds, relay clicks then dead.

Repair/Solution:

The resistor R751 was blown. Replace the IC704 & R751.

114) Model: SHARP LCD TV Repair tips

Symptom: The Sharp LCD TV still under protection mode?

The Sharp LCD TV always has the protection mode come out. Normally, the repairer will first check the inverter board, after that power board (PSU), if still can't get any result, and then they will check the signal board/mainboard. Even you change the inverter or PSU board, the LCD TV still under protection mode. Actually the LCD TV has been fixing by the repairer, but they don't know the TV still remember the past protection mode inside the memory. So, now you need to know how to clear this protection error inside the LCD TV memory.

Repair/Solution:

Press & hold the CHANNEL DOWN & VOLUME UP buttons, and then power ON the LCD TV. The LCD TV Protection Error has been clear & solved the TV problem.

COLLECTION OF LCD TELEVISION REPAIR TIPS

115) Model: Sharp LC-52BD80U LCD TV

Symptom: Display has horizontal lines, White Display or Flashing/Flickering picture.

Cause: LCD Driver PWB ribbon cables may be damaged. See the picture below:



Description	Current Part	New Part	Interchange ability
LCD Driver PWB Ribbon Cable	-	QPWBM0563TPZZ	A

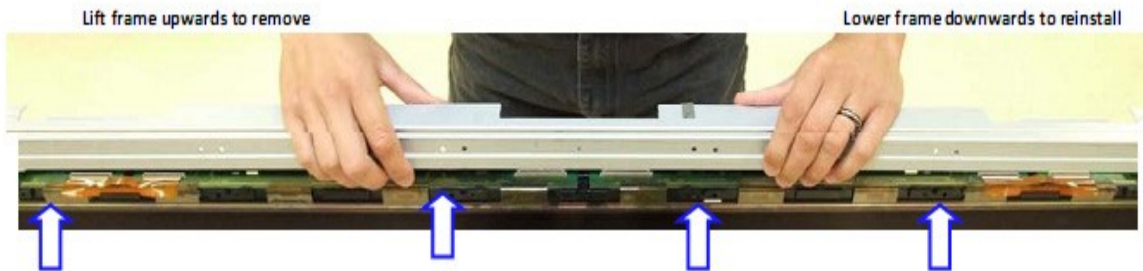
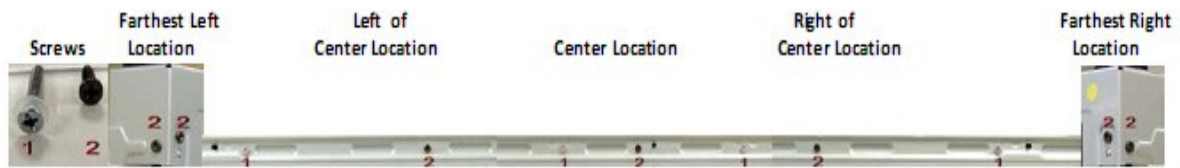
Repair/Solution:

When servicing units due to an occurrence mentioned above, check and if necessary replace the LCD Driver PWB ribbon cable.

COLLECTION OF LCD TELEVISION REPAIR TIPS

Replace damaged LCD Driver PWB ribbon cables on LC52BD80U

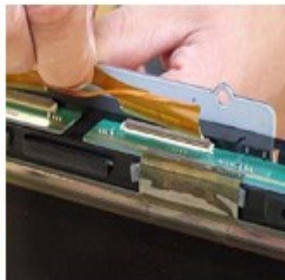
To Remove Front and Back Cabinets refer to Service Manual



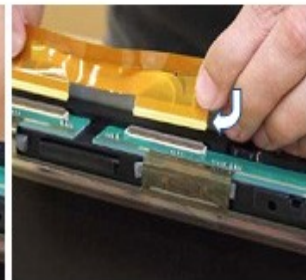
Hold down LCD driver PWB and then lift up front of brown connector



Brown tab lock is now open. Repeat step on other brown connector locking tab



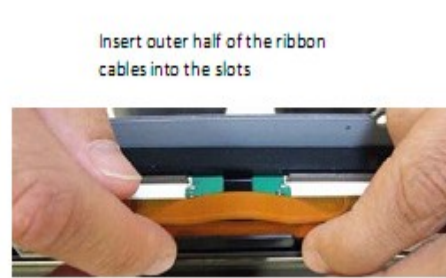
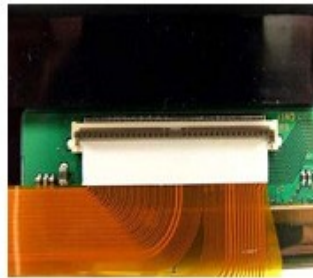
After both tabs are open lift upwards on ribbon cable to unseat it



Ribbon cable is removed. ***PLEASE NOTE RIBBON NOTCHES***



Install new ribbon cables making sure ribbon notches are within the connector fully.



Insert outer half of the ribbon cables into the slots



New Ribbon cable is now installed in slot. Repeat this step on the other cable if needed.

Re-install the upper metal frame for the LCD panel.
Install frame in a downwards fashion so not to damage the ribbon cables.
Assemble front and back cabinet per Service Manual.

COLLECTION OF LCD TELEVISION REPAIR TIPS

SKYWORTH

116) Model: Skyworth 30AAA Chassis 8TP2 LCD TV

Symptom: Sometime display white screen and then back to normal. After power on the TV, the words “Please wait” character move to top left side.

Repair/Solution:

Replaced the U804 (APX1117-5V) and the TV is working properly now.

COLLECTION OF LCD TELEVISION REPAIR TIPS

SONY

117) Model: SONY KDL32S2010E Chassis WAX2 LCD TV

Symptom: Switches to standby for a short while, then back again.

Repair/Solution:

Replace standby push button on user control, has contact resistance.

118) Model: Sony KDL32U2000 Chassis SE1 LCD TV

Symptom: No Picture.

Repair/Solution:

Check SMD fuse CP101P on T-CON board. The T-CON board is behind the BDT board

119) Model: SONY KDL40U2000 with SE1 Chassis LCD TV

Symptom: No start-up, red LED light flashes 3 times.

Repair/Solution:

TV has slow start-up before this symptom occurred. When check standby 5v ok and PSU is heat sensitive. Check and replace the C6055 (47uf/25v) in G2 supply it will solve the problem.

COLLECTION OF LCD TELEVISION REPAIR TIPS

120) Model: SONY KDL40U2000 LCD TV

Symptom: Error codes 4

LED light turns green, flashes 4 times then goes green again and flashes 4 times again. Fuse (500mA) on inverter panel is open circuit.

Repair/Solution:

Replace the fuse on inverter board.

121) Model: SONY KLV26U2520 Chassis SE1 LCD TV

Symptom: No picture but sound ok.

Repair/Solution:

Check SMD fuse CP101P on LVDS panel (T-CON).

122) Model: Sony KDL32U2000 Chassis SE1 LCD TV

Symptom: Stuck in standby. Standby LED light is green.

Red LED light flashes 3 times. No remote control or front panel functions.

Repair/Solution:

Check or replace D301 zener diode (can be use a 5v zener diode) for short circuit.

COLLECTION OF LCD TELEVISION REPAIR TIPS

SYLVANIA

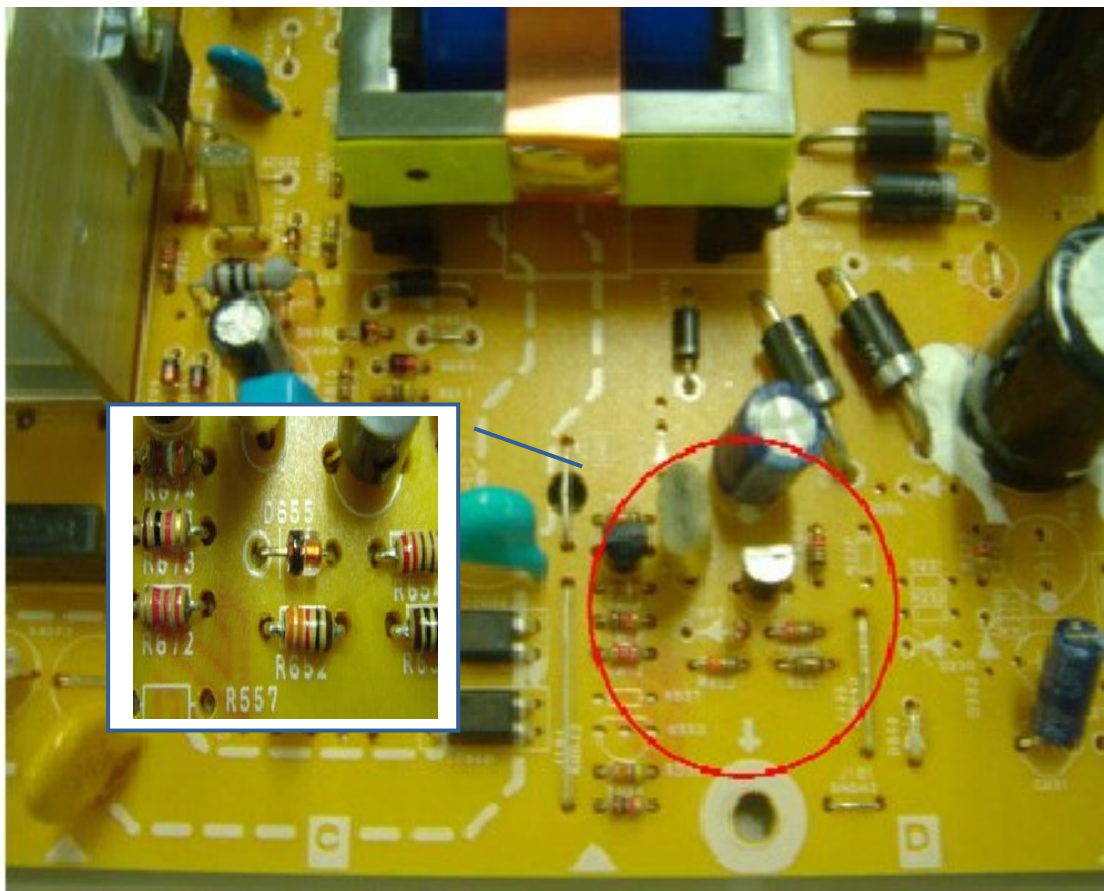
123) Model: Sylvania LC-420SSB (A81 H1UH)

Symptom: High frequency noise from power transformer T600 when the TV is in the standby mode.

Repair/Solution:

Remove diode D655 from the power supply.

Diode location:



COLLECTION OF LCD TELEVISION REPAIR TIPS

124) Model: Sylvania LC420SS8 LCD TV

With Power Supplies:

1ESA20888

1ESA20888-PW

1ESA14710

1ESA14710-PW

Symptom: Low level hums (buzz) sound from speakers.

Repair/Solution:

Perform the following fix on the power supply board.

1. Cut Jumper J220 as shown in Figure 1.
2. Cut Jumper J256 as shown in Figure 1.
3. Solder a wire (about 140mm AWG20) from J190 to J256. On J256, solder the jumper on the Audio Amplifier (IC800) side as shown in Figure 2.
4. Bond the wire to the board as shown in Figure 3.



Figure 1

COLLECTION OF LCD TELEVISION REPAIR TIPS

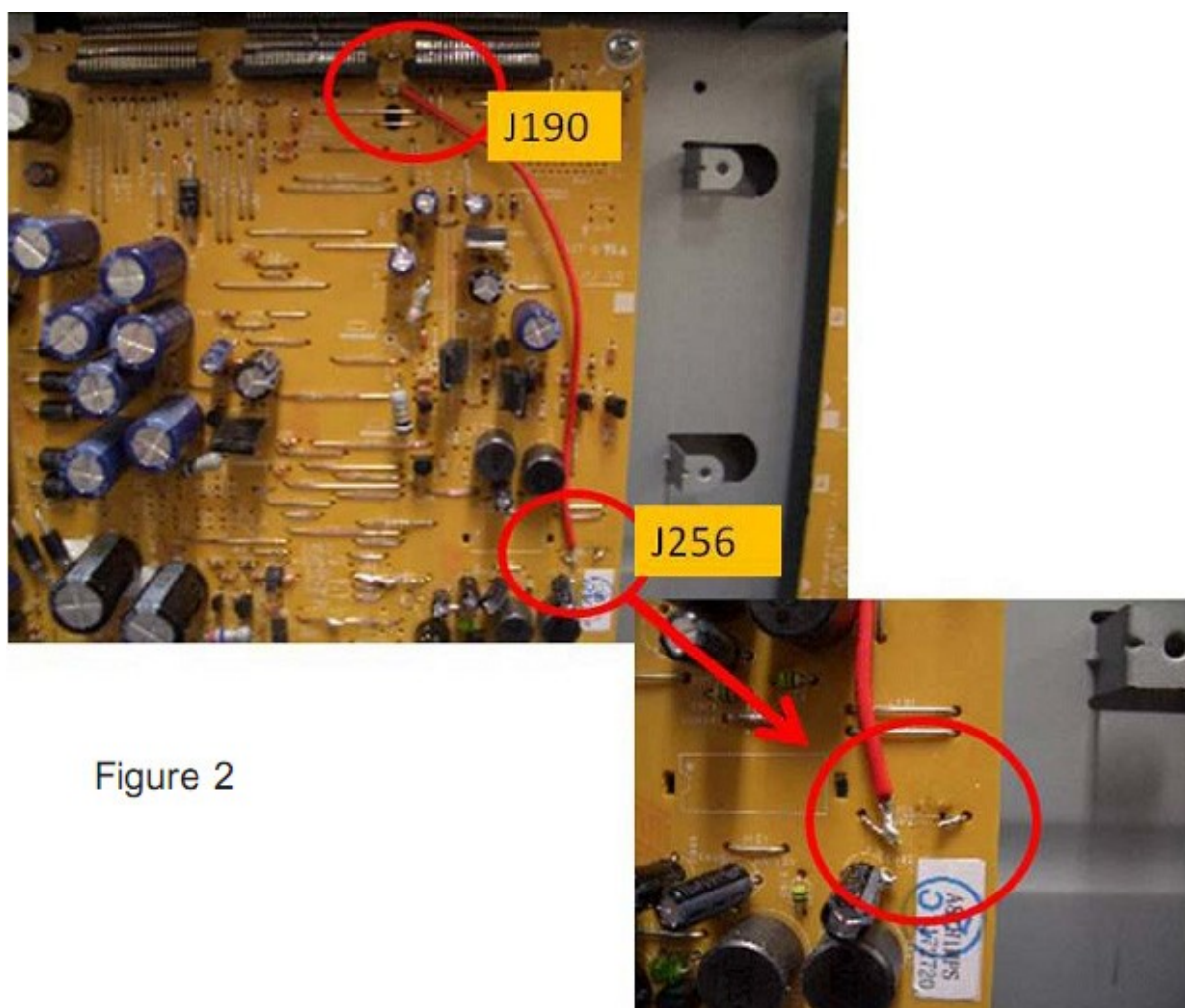


Figure 2



Figure 3

TOSHIBA

125) Model: Toshiba 32WLT58 LCD TV

Symptom: Dead

Repair/Solution:

Check F870 (2A), Q860 (STRZ4479) and D866. If F801 open circuit, then check the voltage regulator Q820 for short circuit. Also checked R831 (4.7R/5W) and D825 (MTZJ33A).

126) Model: Toshiba 20W330DB Chassis 17MB222 (Vestel) LCD TV

Symptom: No Power

Repair/Solution:

The main fuse F800 (T2.5A) blew. Found main filter TR801 short circuit, D824 (ST-TH12R06FP) also shorted. Check SMD IC802 (FAN7529) and Q803 (FQPF13N50C) both short circuits. R830 (0.22R/3W) and SMD resistor R823 (15R) both also open circuits.

127) Model: Toshiba 20W330DB Chassis 17MB222 (Vestel) LCD TV

Symptom: Stuck in Standby Mode.

Repair/Solution:

If the EEPROM IC was removed, the standby LED light turns to green colour. But still can't start-up. Try to programme a new EEPROM IC, because can't get the actual version of firmware, and then replace a new mainboard (17MB22-2). The TV is working properly now.

VIEWSONIC

128) Model: Viewsonic N3260W VS114361M LCD TV

Symptom: No startup

Repair/Solution:

Check capacitors (with ESR Capacitor tester), Q7 and SMD resistor R65 (5.1R) in primary side of PSU. This TV set using the FSP228-3F01 PSU.

129) Model: Viewsonic N3260W VS114361M LCD TV

Symptom: Picture flickers and is brighter on the right, than on the left.

Repair/Solution:

Replace four electrolytic capacitors (2x 820uF and 2x 1000uF) in upper left PSU.

COLLECTION OF LCD TELEVISION REPAIR TIPS

VIZIO

130) Model: Vizio VO42LFHDTV10A LCD TV

Symptom: Green distortion in picture.

Repair/Solution:

If PSU secondary side voltages ok. Check & clean contacts of ribbon cables coming from control board.

WESTINGHOUSE

131) Model: Westinghouse LTV40W1HDC LCD TV

Symptom: Blue screen. No sound, no picture and no OSD.

Repair/Solution:

Replace circuit protector fuse on T-CON board.

WHARFEDALE

132) Model: Wharfedale LCD3210AF Chassis 17MB116 LCD TV

Symptom: Starts-up, backlight came after that switches off immediately.

TV runs ok when inverter board is externally supplied with 24v.

Repair/Solution:

Replace the C877 and C878 (15nf/630v) between heatsink of switching transistor and larger transformer on the primary side of the PSU.

COLLECTION OF LCD TELEVISION REPAIR TIPS

Fast Search Fault Index:

The Fast Search Fault Index (FSFI) is to let you easily find the repair tips or problems/solutions for similar symptom of your LCD TV especially if your LCD TV brand or model is not listed in this E-book. You can compare your LCD TV symptoms with other similar symptoms repair tips. This will give you some ideas and you will know which section or common components failure of that symptom in LCD TV.

<i>Symptoms:</i>	<i>Repair Case No.:</i>
1) <u>No Power, Dead.</u>	1,12, 21, 22, 23, 24, 42, 44, 54, 55, 60, 83, 93, 105, 112, 113, 125,126
2) <u>No Start-up, Slow Start-up, Stuck in Standby Mode (Power LED light no change, remain the red or orange colour).</u>	2, 3, 9, 11, 16, 17, 38, 43, 46, 51, 58, 72, 76, 77, 90, 98, 100, 102, 103, 113, 117, 127, 128
3) <u>No Display, Blank Screen, No Display but the Power LED light change to Green or Blue colour.</u>	5, 10, 20, 25, 59, 74, 78, 82, 118, 121, 122
4) <u>No Display or Display Shutdown and the Power LED light Blinking/Flashing.</u>	6, 18, 49, 56, 70, 75, 79, 80, 81, 87, 119
5) <u>Display Distortion Problem, Solarisation Images, Negative Picture, Double Images, Half Screen in Purple or Black Colour.</u>	39, 40, 41, 48, 53, 57, 63, 84, 94, 108, 109, 110, 111, 130, 131
6) <u>Hum, Buzzing or Hissing Noise from LCD TV.</u>	27, 28, 67, 75, 80, 104, 123, 124
7) <u>Sound / Audio Problems.</u>	26, 29, 30, 31, 36, 37, 64, 68

COLLECTION OF LCD TELEVISION REPAIR TIPS

8) <u>Erratic Functions or Problem, Intermittent Problems.</u>	15, 65, 66, 69, 71, 89, 95, 96, 97
9) <u>Display Darkness, No Backlight, Backlight Failure, Inverter Board.</u>	19, 47, 92, 99, 105, 106
10) <u>Display Shutdown After 1second or more.</u>	7, 132
11) <u>White Screen</u>	13, 96, 115, 116
12) <u>Display Colour Problems</u>	35, 109
13) <u>Horizontal or Vertical Lines/Bars on the screen.</u>	33, 73, 85, 107, 111, 115
14) <u>Remote Control No Function, TV can't receive any signal from Remote Control.</u>	4, 8, 50, 62
15) <u>Screen show "No Signal" or "No Input Signal", but backlight, OSD Menu and the power LED light is green or blue colour.</u>	45, 52
16) <u>OSD Menu Problem.</u>	14
17) <u>Display Flickering, Video Stuttering.</u>	101, 129

COLLECTION OF LCD TELEVISION REPAIR TIPS

18) <u>Solved TV Under Protection Mode, Error Code.</u>	114, 120
19) <u>Login to the Service Mode, Hotel Mode.</u>	34, 61
20) <u>After Changed Mainboard Problem Occur.</u>	32, 86, 88

For the complete learn LCD Television repair, I highly recommend you join the LCD Television Repair membership site as below:

[Http://www.LCD-Television-Repair.com](http://www.LCD-Television-Repair.com)



Conclusion:

I strongly suggest you to print out this e-book and binding it as a book for easy reference.

If you have questions about LCD Television Repair, please do not hesitate to send me an email at:

fastrepairguide@gmail.com

I wish you all the best and look forward to hearing your success story. Enjoy repair!

To your success,

Kent Liew

<http://www.LCDRepairGuide.com>

<http://www.LCD-Television-Repair.com>

<http://www.Plasma-Television-Repair.com>

<http://www.Projection-Tv-Repair.com>

<http://www.FastRepairGuide.com>

Bonus: Problem Solution for **Samsung SMPS Power** **Supply and IP Board**

Cover Part Numbers:

BN44-00338A

BN44-00338B

BN44-00339A

BN44-00339B

BN44-00340A

BN44-00340B

BN44-00341A

BN44-00341B

BN44-00351B

BN44-00353A

BN44-00368B

BN44-00369A

Samsung IP-Board and the SMPS Power Supply Problem Solution

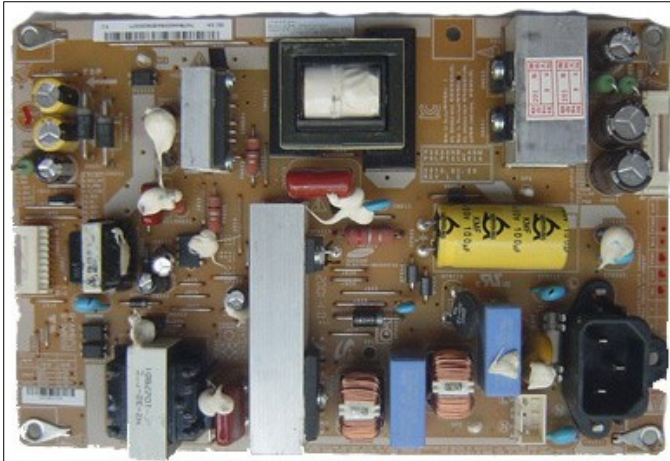
Board Code	Location	Component	Part code	Spec	Repair	Symptom
BN44-00338A	FP801S	FUSE	BN81-04732A	250V, 5.0A	Open Checking	No Power
	ICB801	PWM CONTROL IC	BN81-04776A	8-DIP, ST	Short Checking : Pin no.4, 5 and 3	
	QP801S	M	BN81-04740A	600V, 10A	Drain, Source Short Checking	
	ICM801	PWM CONTROL IC	BN81-04777A	9-DIP, ST	Short Checking : Pin no.1, 9, 5	
BN44-00338A	FP801S	FUSE	BN81-04732A	250V, 5.0A	Open Checking	No Power
	ICB801	PWM CONTROL IC	BN81-04776A	8-DIP, ST	Short Checking : Pin no.4, 5 and 3	
	QP801S	M	BN81-04740A	600V, 10A	Drain, Source Short Checking	
	ICM801	PWM CONTROL IC	BN81-04777A	9-DIP, ST	Short Checking : Pin no.1, 9, 5	
BN44-00338A	FP801S	FUSE	BN81-04732A	250V, 5.0A	Open Checking	No Power
	ICB801	PWM CONTROL IC	BN81-04776A	8-DIP, ST	Short Checking : Pin no.4, 5 and 3	
	QP801S	M	BN81-04740A	600V, 10A	Drain, Source Short Checking	
	ICM801	PWM CONTROL IC	BN81-04777A	9-DIP, ST	Short Checking : Pin no.1, 9, 5	
BN44-00369A	FP801S	FUSE	BN81-04732A	250V, 5.0A	Open Checking	No Power
	IC801S	PWM CONTROL IC	BN81-04776A	8-DIP, ST	Short Checking : Pin no.4, 5 and 3	
	QP801S	MOSFET	BN81-04749A	600V, 10A	Drain, Source Short Checking	
	MI801S,MI802S	MOSFET	BN81-04746A	500V, 4A	Drain, Source Short Checking	
BN44-00338B	FD801S	FUSE	BN81-04730A	250V, 2.0A	Open Checking	No Power from Inverter
	FP801S	FUSE	BN81-04732A	250V, 5.0A	Open Checking	
	ICB801	PWM CONTROL IC	BN81-04776A	8-DIP, ST	Short Checking : Pin no.4, 5 and 3	
	QP801S	M	BN81-04740A	600V, 10A	Drain, Source Short Checking	
BN44-00338B	ICM801	PWM CONTROL IC	BN81-04777A	9-DIP, ST	Short Checking : Pin no.1, 9, 5	No Power
	FP801S	FUSE	BN81-04732A	250V, 5.0A	Open Checking	
	ICB801	PWM CONTROL IC	BN81-04776A	8-DIP, ST	Short Checking : Pin no.4, 5 and 3	
	QP801S	M	BN81-04740A	600V, 10A	Drain, Source Short Checking	
BN44-00338B	ICM801	PWM CONTROL IC	BN81-04777A	9-DIP, ST	Short Checking : Pin no.1, 9, 5	No Power : 13V, 24V
	FP801S	FUSE	BN81-04732A	250V, 5.0A	Open Checking	
	ICB801	PWM CONTROL IC	BN81-04776A	8-DIP, ST	Short Checking : Pin no.4, 5 and 3	
	QP801S	M	BN81-04740A	600V, 10A	Drain, Source Short Checking	
BN44-00338B	ICM801	PWM CONTROL IC	BN81-04777A	9-DIP, ST	Short Checking : Pin no.1, 9, 5	No Power
	FP801S	FUSE	BN81-04732A	250V, 5.0A	Open Checking	
	ICB801	PWM CONTROL IC	BN81-04776A	8-DIP, ST	Short Checking : Pin no.4, 5 and 3	
	QP801S	M	BN81-04740A	600V, 10A	Drain, Source Short Checking	
BN44-00338B	ICM801	PWM CONTROL IC	BN81-04777A	9-DIP, ST	Short Checking : Pin no.1, 9, 5	No Power : 13V, 24V
	FP801S	FUSE	BN81-04732A	250V, 5.0A	Open Checking	
	ICB801	PWM CONTROL IC	BN81-04776A	8-DIP, ST	Short Checking : Pin no.4, 5 and 3	
	QP801S	M	BN81-04740A	600V, 10A	Drain, Source Short Checking	
BN44-00338B	ICM801	PWM CONTROL IC	BN81-04777A	9-DIP, ST	Short Checking : Pin no.1, 9, 5	No Power
	FP801S	FUSE	BN81-04732A	250V, 5.0A	Open Checking	
	ICB801	PWM CONTROL IC	BN81-04776A	8-DIP, ST	Short Checking : Pin no.4, 5 and 3	
	QP801S	M	BN81-04740A	600V, 10A	Drain, Source Short Checking	
BN44-00338B	ICM801	PWM CONTROL IC	BN81-04777A	9-DIP, ST	Short Checking : Pin no.1, 9, 5	No Power : 13V, 24V
	FP801S	FUSE	BN81-04732A	250V, 5.0A	Open Checking	
	ICB801	PWM CONTROL IC	BN81-04776A	8-DIP, ST	Short Checking : Pin no.4, 5 and 3	
	QP801S	M	BN81-04740A	600V, 10A	Drain, Source Short Checking	
BN44-00339B	BD801S	BRIDGE DIODE	BN81-04722A	TS4B05G	Short Checking	No Power
	QP801	MOSFET	BN81-04767A	SD10N60C	Short Checking	No Power
	QP802	MOSFET	BN81-04767A	SD10N60C	Short Checking	No Power
	QS802	MOSFET	BN81-04765A	MDS1653	Short Checking	Switch Defect on 5V
BN44-00338B	FP801S	FUSE	BN81-04732A	250V, 5.0A	Open Checking	No Power
	ICB801	PWM CONTROL IC	BN81-04776A	8-DIP, ST	Short Checking : Pin no.4, 5 and 3	
	QP801S	M	BN81-04740A	600V, 10A	Drain, Source Short Checking	
	ICM801	PWM CONTROL IC	BN81-04777A	9-DIP, ST	Short Checking : Pin no.1, 9, 5	
BN44-00339B	BD801S	BRIDGE DIODE	BN81-04722A	TS4B05G	Short Checking	No Power
	QP801	MOSFET	BN81-04767A	SD10N60C	Short Checking	No Power
	QP802	MOSFET	BN81-04767A	SD10N60C	Short Checking	No Power
	QS802	MOSFET	BN81-04765A	MDS1653	Short Checking	Switch Defect on 5V
BN44-00339B	BD801S	BRIDGE DIODE	BN81-04722A	TS4B05G	Short Checking	No Power
	QP801	MOSFET	BN81-04767A	SD10N60C	Short Checking	No Power
	QP802	MOSFET	BN81-04767A	SD10N60C	Short Checking	No Power
	QS802	MOSFET	BN81-04765A	MDS1653	Short Checking	Switch Defect on 5V
BN44-00339B	BD801S	BRIDGE DIODE	BN81-04722A	TS4B05G	Short Checking	No Power
	QP801	MOSFET	BN81-04767A	SD10N60C	Short Checking	No Power
	QP802	MOSFET	BN81-04767A	SD10N60C	Short Checking	No Power
	QS802	MOSFET	BN81-04765A	MDS1653	Short Checking	Switch Defect on 5V
BN44-00339A	FP801S	FUSE	BN81-04732A	250V, 5.0A	Open Checking	No Power
	ICB801	PWM CONTROL IC	BN81-04776A	8-DIP, ST	Short Checking : Pin no.4, 5 and 3	
	QP801S	MOSFET	BN81-04750A	600V, 11A	Drain, Source Short Checking	
	ICM801	PWM CONTROL IC	BN81-04777A	9-DIP, ST	Short Checking : Pin no.1, 9, 5	
BN44-00339A	FP801S	FUSE	BN81-04732A	250V, 5.0A	Open Checking	No Power
	ICB801	PWM CONTROL IC	BN81-04776A	8-DIP, ST	Short Checking : Pin no.4, 5 and 3	
	QP801S	MOSFET	BN81-04750A	600V, 11A	Drain, Source Short Checking	
	ICM801	PWM CONTROL IC	BN81-04777A	9-DIP, ST	Short Checking : Pin no.1, 9, 5	
BN44-00339A	FP801S	FUSE	BN81-04732A	250V, 5.0A	Open Checking	No Power
	ICB801	PWM CONTROL IC	BN81-04776A	8-DIP, ST	Short Checking : Pin no.4, 5 and 3	
	QP801S	MOSFET	BN81-04750A	600V, 11A	Drain, Source Short Checking	
	ICM801	PWM CONTROL IC	BN81-04777A	9-DIP, ST	Short Checking : Pin no.1, 9, 5	
BN44-00339A	FP801S	FUSE	BN81-04732A	250V, 5.0A	Open Checking	No Power
	ICB801	PWM CONTROL IC	BN81-04776A	8-DIP, ST	Short Checking : Pin no.4, 5 and 3	
	QP801S	MOSFET	BN81-04750A	600V, 11A	Drain, Source Short Checking	
	ICM801	PWM CONTROL IC	BN81-04777A	9-DIP, ST	Short Checking : Pin no.1, 9, 5	
						Page 2

BN44-00341A	MI801S, MI802S	MOSFET	BN81-04759A	FDPF16N50UT	Lamp blinking checking	No Power from Inverte
	FM801S	FUSE	BN81-04735A	3.15A 250V		
	QP801S, QP802S	MOSFET	BN81-04768A	SD14N60	PFC Voltage Checking	No Power
	FS801S	FUSE	BN81-04738A	6.3A 250V		
	UM801S	PWM CONTROL IC	BN81-04786A	STR-W6052S	Multi Power Checking	No Power
BN44-00341A	MI801S, MI802S	MOSFET	BN81-04759A	FDPF16N50UT	Lamp blinking checking	No Power from Inverte
	FM801S	FUSE	BN81-04735A	3.15A 250V		
	QP801S, QP802S	MOSFET	BN81-04768A	SD14N60	PFC Voltage Checking	No Power
	FS801S	FUSE	BN81-04738A	6.3A 250V		
	UM801S	PWM CONTROL IC	BN81-04786A	STR-W6052S	Multi Power Checking	No Power
BN44-00341B	QI802 QI808	MOSFET	BN81-04758A	FDPF12N50UT	Short Checking	No Picture
	ICI801	PWM CONTROL IC	BN81-04783A	LX6503A	Short Checking	No Picture
	QP801, QP802	MOSFET	BN81-04769A	STF13NM60N	Short Checking	No Power
	QM801	MOSFET	BN81-04764A	MDD3752	Short Checking	No Power
	QM803	MOSFET	BN81-04765A	MDS1653	Short Checking	Switch Defect on B+
BN44-00341B	QI802 QI808	MOSFET	BN81-04758A	FDPF12N50UT	Short Checking	No Picture
	ICI801	PWM CONTROL IC	BN81-04783A	LX6503A	Short Checking	No Picture
	QP801, QP802	MOSFET	BN81-04769A	STF13NM60N	Short Checking	No Power
	QM801	MOSFET	BN81-04764A	MDD3752	Short Checking	No Power
	QM803	MOSFET	BN81-04765A	MDS1653	Short Checking	Switch Defect on B+
BN44-00341B	QI802 QI808	MOSFET	BN81-04758A	FDPF12N50UT	Short Checking	No Picture
	ICI801	PWM CONTROL IC	BN81-04783A	LX6503A	Short Checking	No Picture
	QP801, QP802	MOSFET	BN81-04769A	STF13NM60N	Short Checking	No Power
	QM801	MOSFET	BN81-04764A	MDD3752	Short Checking	No Power
	QM803	MOSFET	BN81-04765A	MDS1653	Short Checking	Switch Defect on B+
BN44-00341B	QI802 QI808	MOSFET	BN81-04758A	FDPF12N50UT	Short Checking	No Picture
	ICI801	PWM CONTROL IC	BN81-04783A	LX6503A	Short Checking	No Picture
	QP801, QP802	MOSFET	BN81-04769A	STF13NM60N	Short Checking	No Power
	QM801	MOSFET	BN81-04764A	MDD3752	Short Checking	No Power
	QM803	MOSFET	BN81-04765A	MDS1653	Short Checking	Switch Defect on B+
BN44-00341B	QI802 QI808	MOSFET	BN81-04758A	FDPF12N50UT	Short Checking	No Picture
	ICI801	PWM CONTROL IC	BN81-04783A	LX6503A	Short Checking	No Picture
	QP801, QP802	MOSFET	BN81-04769A	STF13NM60N	Short Checking	No Power
	QM801	MOSFET	BN81-04764A	MDD3752	Short Checking	No Power
	QM803	MOSFET	BN81-04765A	MDS1653	Short Checking	Switch Defect on B+
BN44-00351B	FS801S, FS802S	Fuse	BN81-04731A	250V, 4.0A	Open Checking	No Power
BN44-00353A	FS801S, FS802S	Fuse	BN81-04734A	250V, 6.3A	Open Checking	No Power
BN44-00368B	QI802 QI808	MOSFET	BN81-04770A	STF5N52U	Short Checking	No picture
BN44-00369B	QI802 QI808	MOSFET	BN81-04770A	STF5N52U	Short Checking	No picture

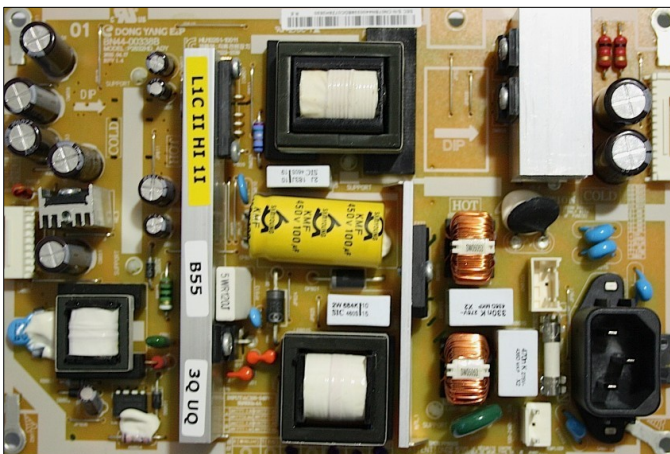
For more Samsung IP board and SMPS Power Supply Schematic Diagrams, please visit to:

<http://www.LCD-Television-Repair.com>

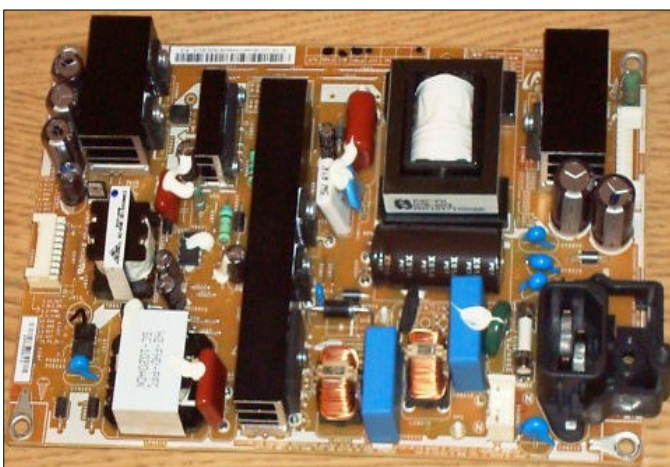
The Actual PCB Board of these Samsung SMPS & IP Board



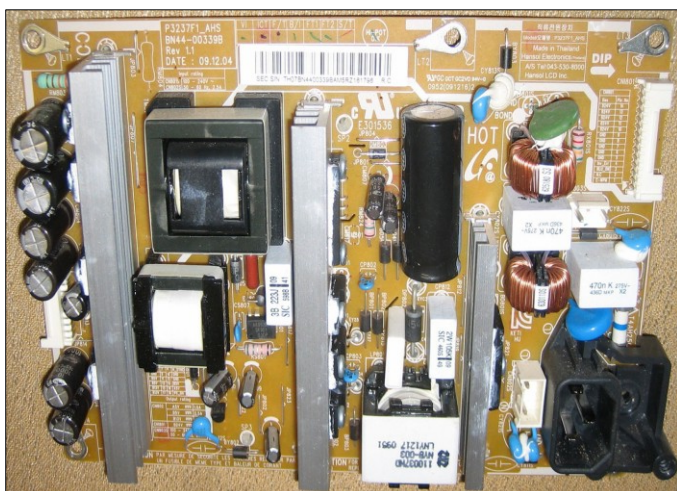
BN44-00338A



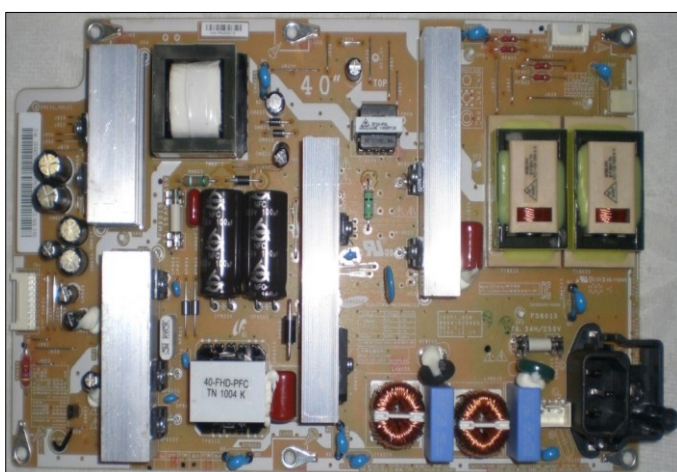
BN44-00338B



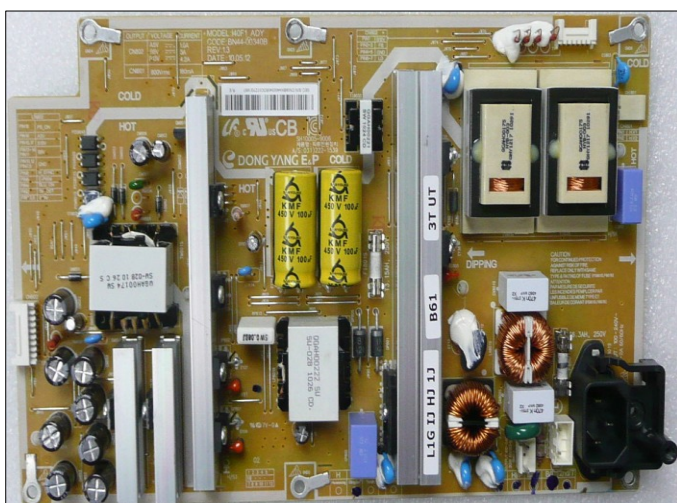
BN44-00339A



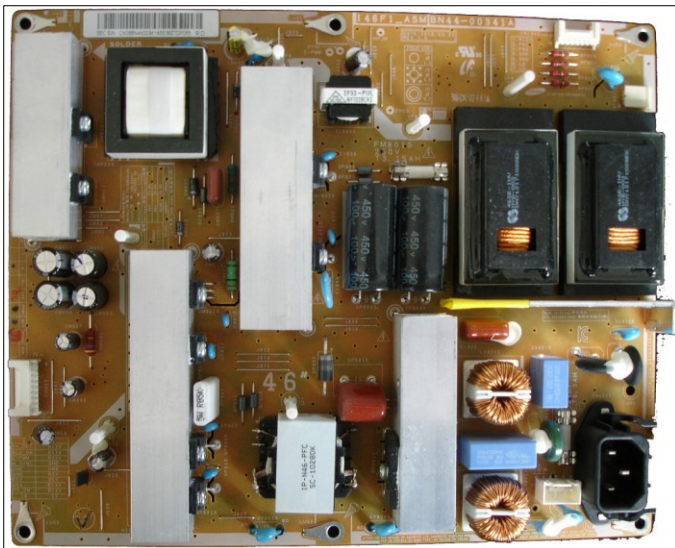
BN44-00339B



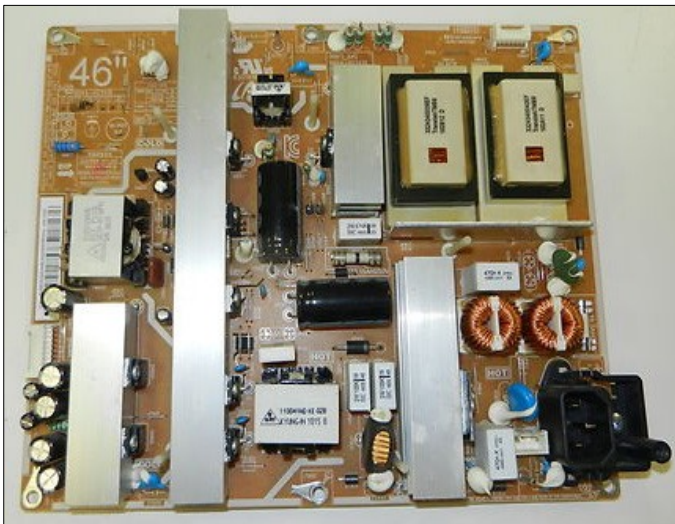
BN44-00340A



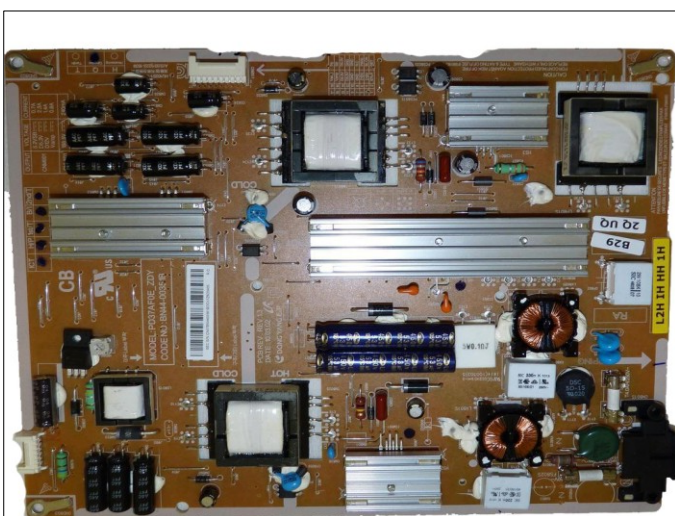
BN44-00340B



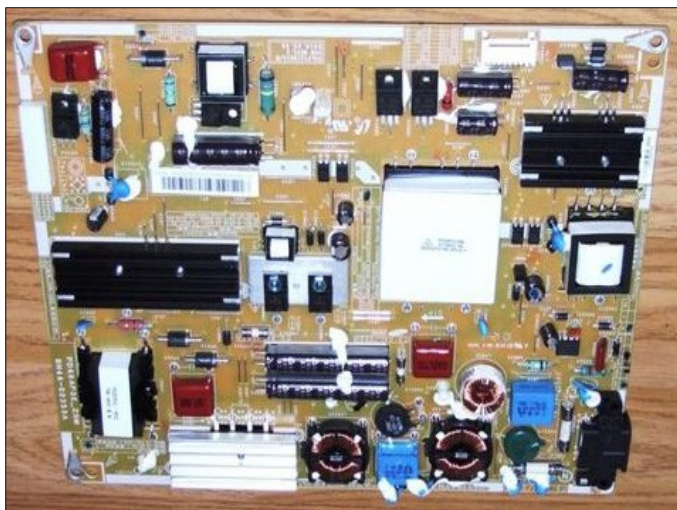
BN44-00341A



BN44-00341B



BN44-00351B



BN44-00353A







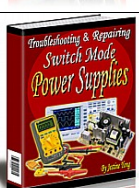
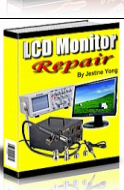


This is BN44-00368A
photo, but it is substitute by using [BN44-00368B](#)



BN44-00369A

Other Resources:

Below is a list of electronic repairing related information:

	<p><u>LCD TV Repair Membership Site</u> This is complete repair information for LCD Television! These repair information included: training manual, service manual, psu schematic diagram, service bulletin, firmware, disassembly lcd tv & so on!</p>
	<p><u>Plasma TV Repair Membership Site</u> If you're a Plasma TV repairer, then these Plasma TV repair information is you want! Some hard to find information also included inside this Plasma TV Repair Membership Site!</p>
	<p><u>Projection TV Repair Membership Site</u> This membership site included two main repair information, these are Projection TV and Projector!</p>
	<p><u>Testing Electronic Components E-book</u> A guide on how you can test electronic components like a professional. Even some of the testing method you haven't saw or learn before. It is enjoy learning testing electronic components through this value e-book.</p>
	<p><u>SMPS Power Supply Repair Guide</u> This is one of the great SMPS repair guide I have seen. Where Mr. Jestine Yong had reveal all his secret methods to troubleshooting & repairing the power supplies for the reader. Some of his tactic in this guide, I'm sure you're haven't seen it before. Highly recommended must have!</p>
	<p><u>LCD Monitor Repair E-Book</u> A step by step guide on how you can become a Professional in LCD Monitor Repair. Actually after I read this e-book, it is not only LCD Monitor but apply to LCD TV too! Some of the repair tips and gadgets can be apply to the LCD TV troubleshooting & repairing!</p>
	<p><u>Collection of Electronics Repair Articles</u> 24 best selected electronics repair articles on CRT Monitor. This e-book even teaches you how to hand made a Monitor Blur Buster to solve CRT Monitor Display Blur problem or shorted G2 line.</p>
	<p><u>Plasma Tv Repair Guide for Basic Display Fault</u> This e-book will let you know how to identify the screen fault in Plasma TV and which board was causes this problem.</p>